

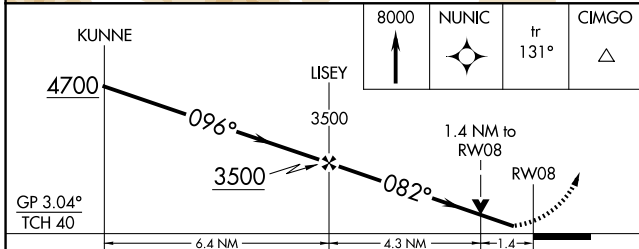
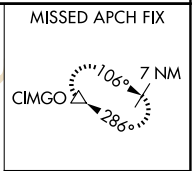
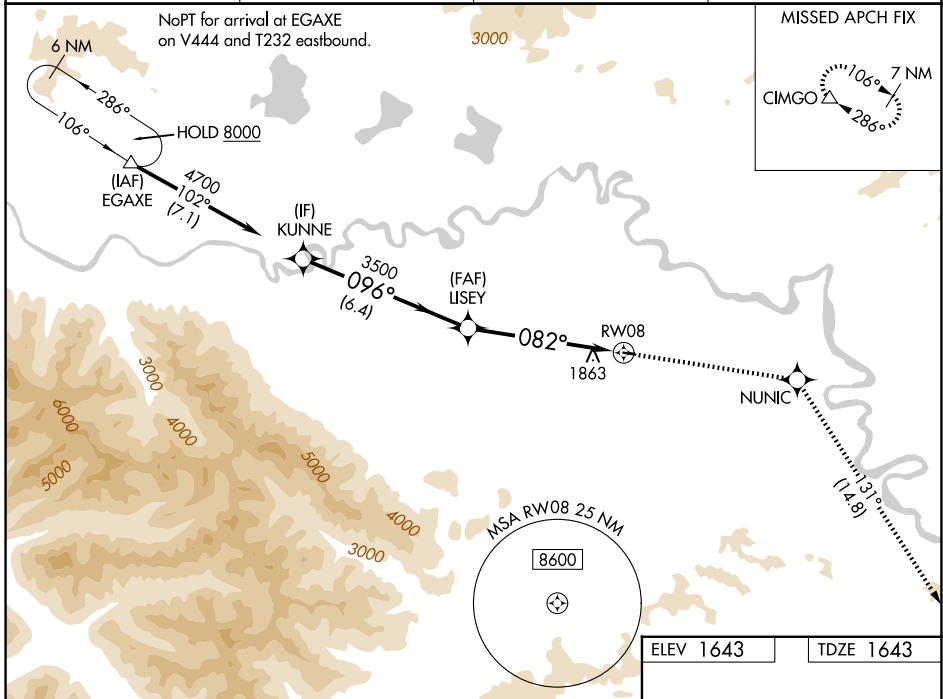
WAAS CH 77546 W08A	APP CRS 082°	Rwy Ldg TDZE Apt Elev	2509 1643 1643
--	------------------------	-----------------------------	---

RNAV (GPS) RWY 8

TOK JUNCTION (6K8) (PFTO)

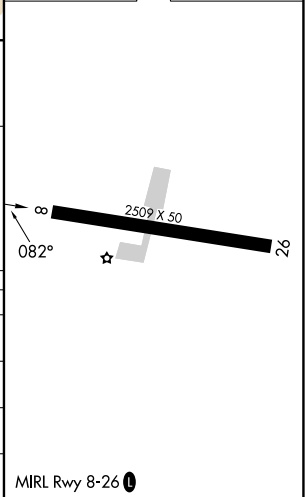
RNP APCH - GPS.	MISSED APPROACH: Climb to 8000 direct NUNIC and on track 131° to CIMGO and hold, continue climb-in-hold to 8000.
<p>▼ Rwy 8 helicopter visibility reduction below 3/4 SM NA. For uncompensated Baro-VNAV systems, LNAV/VNAV NA below -25°C or above 54°C.</p>	

AWOS-3P 118.1	ANCHORAGE CENTER 126.55 323.0	NORTHWAY RADIO 122.4	UNICOM 122.8 (CTAF) 0
-------------------------	---	--------------------------------	---------------------------------



ELEV 1643	TDZE 1643
-----------	-----------

CATEGORY	A	B	C	D
LPV DA	1895-1 252 (300-1)			NA
LNAV/VNAV DA	2120-1 3/8 477 (500-1 3/8)			NA
LNAV MDA	2120-1	477 (500-1)	2120-1 3/8 477 (500-1 3/8)	NA
CIRCLING	2180-1	537 (600-1)	2180-1 1/2 537 (600-1 1/2)	NA



AK, 14 MAY 2026 to 09 JUL 2026

AK, 14 MAY 2026 to 09 JUL 2026