

WAAS CH 49134 W03A	APP CRS 035°	Rwy Ldg 3398 TDZE 941 Apt Elev 943
--	------------------------	---

RNAV (GPS) RWY 3

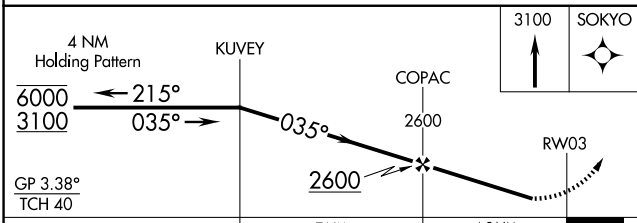
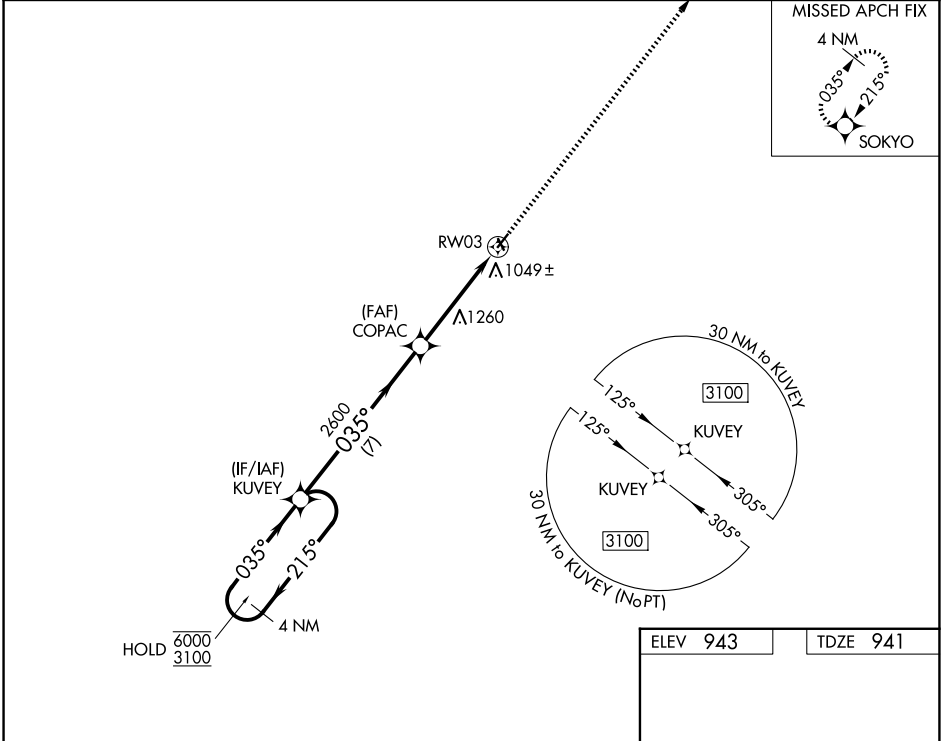
MIAMI COUNTY (K81)

RNP APCH - GPS.

Baro-VNAV NA. Use New Century Aircenter altimeter setting; when not received, use Johnson County Exec altimeter setting and increase all DA 8 feet and all MDA 20 feet. Rwy 3 helicopter visibility reduction below 3/4 SM NA. Circling NA to Rwys 15 and 33.

MISSED APPROACH: Climb to 3100 direct SOKYO and hold.

IXD ASOS 135.325	KANSAS CITY APP CON 118.9 251.075	UNICOM 122.8 (CTAF) 0
----------------------------	---	---------------------------------



ELEV 943	TDZE 941
----------	----------

MIRL Rwy 3-21 0
REIL Rwys 3 and 21 0

CATEGORY	A	B	C	D
LPV DA	1284-1	343 (400-1)		NA
LNAV/VNAV DA	1274-1	333 (400-1)		NA
LNAV MDA	1640-1	699 (700-1)		NA
CIRCLING	1640-1	697 (700-1)		NA

NC-2, 14 MAY 2026 to 11 JUN 2026

NC-2, 14 MAY 2026 to 11 JUN 2026