

APP CRS	Rwy Ldg	<b>2511</b>
<b>188°</b>	TDZE	<b>582</b>
	Apt Elev	<b>582</b>

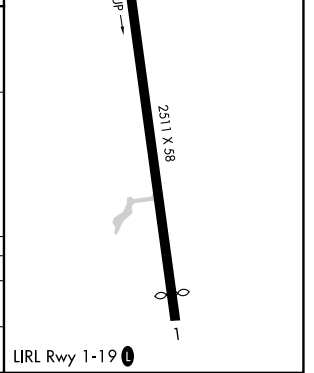
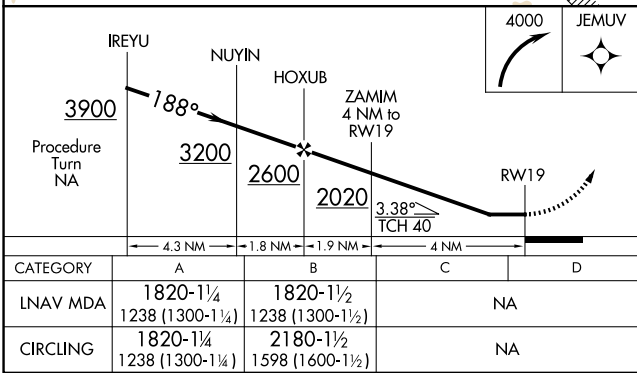
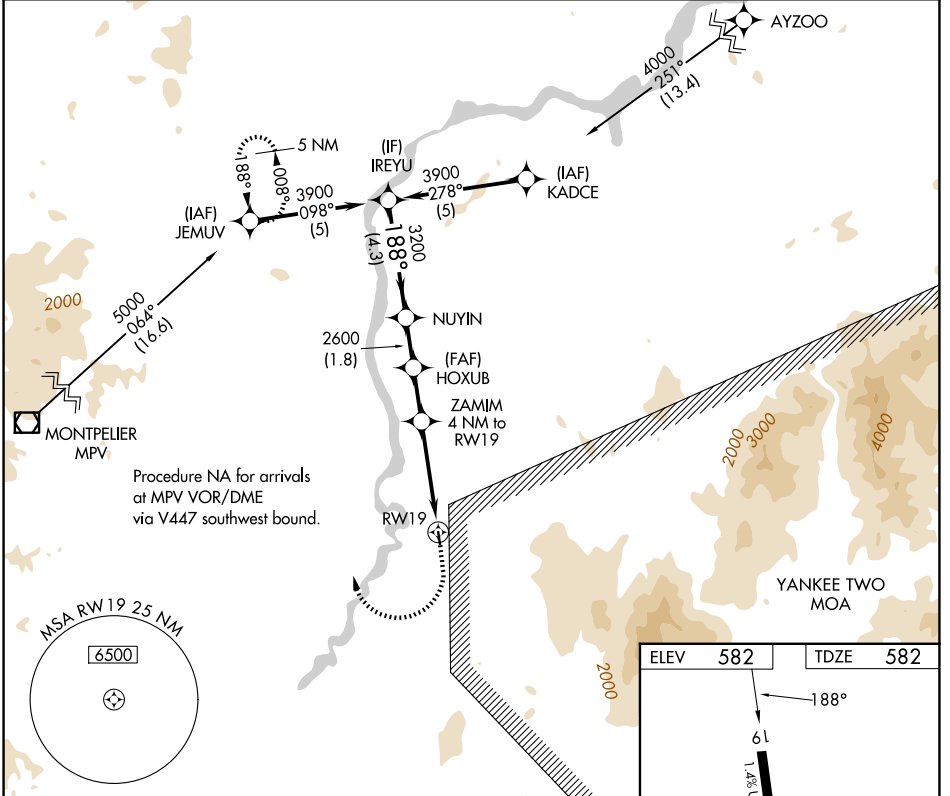
# RNAV (GPS) RWY 19

DEAN MEML (5B9)

**NA** DME/DME RNP-0.3 NA. Procedure NA at night. Visibility reduction by helicopters NA. Use Lebanon altimeter setting; if not received, use Barre-Montpelier, VT altimeter setting and increase all MDAs 80 feet.

**MISSED APPROACH:** Climbing right turn to 4000 direct JEMUV and hold.

LEB ASOS <b>118.65</b>	BOSTON CENTER <b>135.7 282.2</b>	UNICOM <b>122.8 (CTAF) 0</b>
---------------------------	-------------------------------------	---------------------------------



NE-1, 14 MAY 2026 to 11 JUN 2026

NE-1, 14 MAY 2026 to 11 JUN 2026