

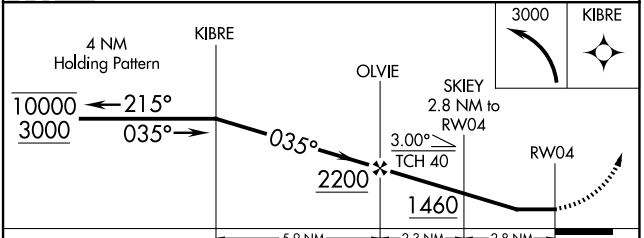
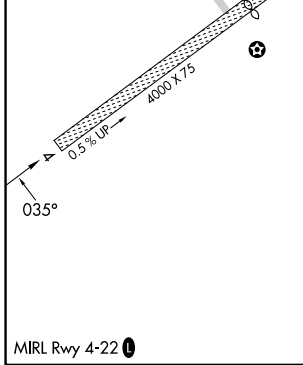
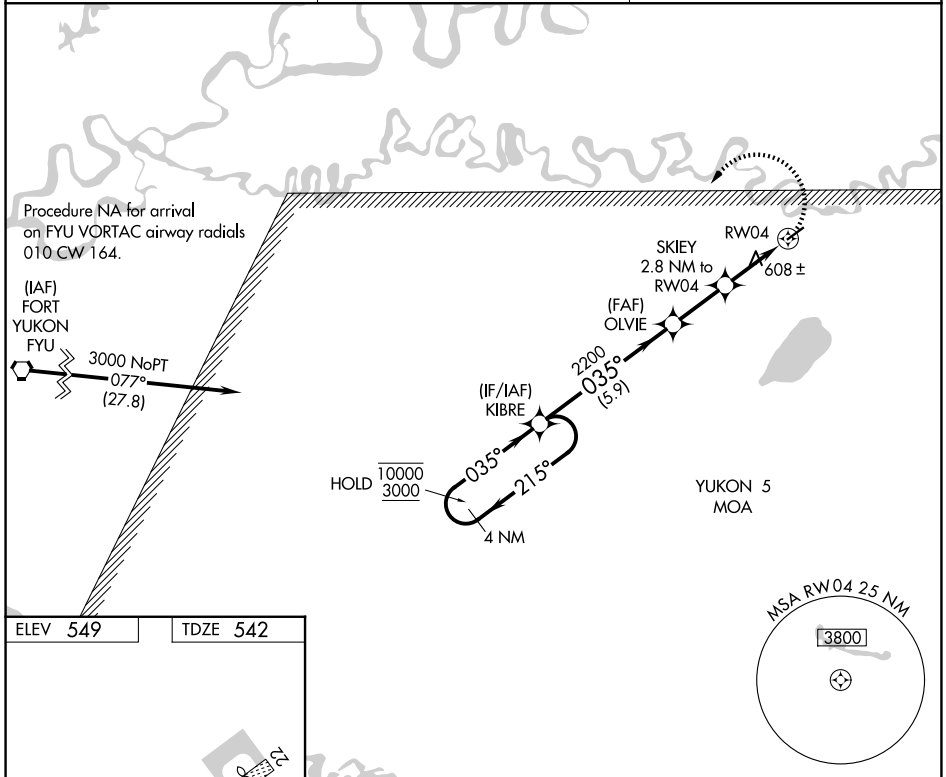
APP CRS 035°	Rwy Ldg TDZE Apt Elev	4000 542 549
------------------------	-----------------------------	---

RNAV (GPS) RWY 4

CHALKYITSIK (CIK) (PACI)

RNP APCH.	<p>Procedure NA at night.</p> <p>NA Rwy 4 helicopter visibility reduction below 1 SM NA. Use Fort Yukon altimeter setting.</p>	MISSED APPROACH: Climbing left turn to 3000 direct KIBRE and hold.
-----------	--	--

FYU/PFYU AWOS-3P 125.8	ANCHORAGE CENTER 135.0 225.4	CTAF 122.9
----------------------------------	--	----------------------



CATEGORY	A	B	C	D
LNAV MDA	960-1	418 (500-1)	960-1½	418 (500-1½)
CIRCLING	1080-1 531 (600-1)	1160-1 611 (700-1)	1200-1¾ 651 (700-1¾)	1360-2¾ 811 (900-2¾)

AK, 14 MAY 2026 to 09 JUL 2026

AK, 14 MAY 2026 to 09 JUL 2026