

APP CRS	Rwy Ldg	3220
024°	TDZE	61
	Apt Elev	61

RNAV (GPS) RWY 2

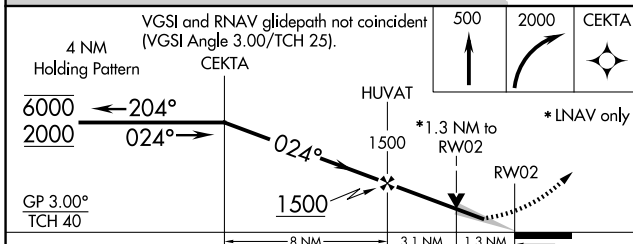
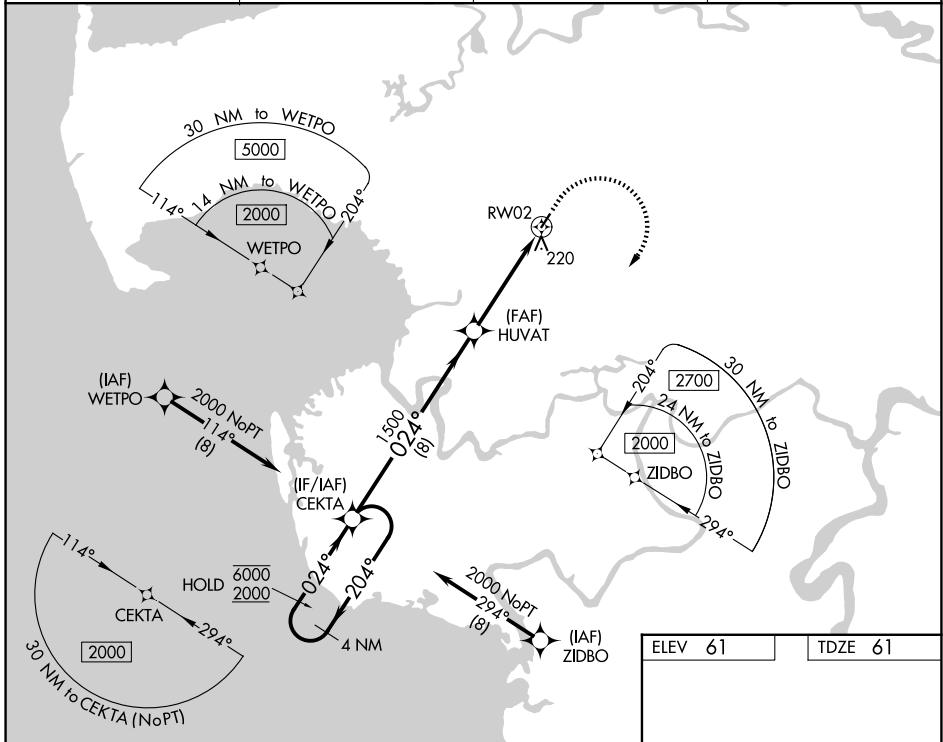
CHEVAK (VAK)(PAVA)

RNP APCH.

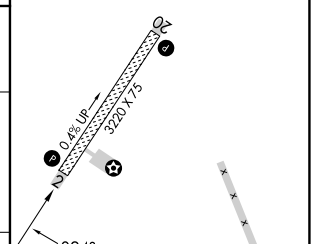
⚠ For uncompensated Baro-VNAV systems, LNAV/VNAV NA below -22°C or above 54°C.

MISSED APPROACH: Climb to 500, then climbing right turn to 2000 direct CEKTA and hold.

AWOS-3P 120.625	ANCHORAGE CENTER 124.5	UNICOM 122.8 ⓪	CTAF 123.0 ⓪
---------------------------	----------------------------------	---------------------------------	-------------------------------



ELEV 61	TDZE 61
---------	---------



CATEGORY	A	B	C	D
LNAV/VNAV DA	381-1		320 (400-1)	
LNAV MDA	480-1	419 (500-1)	480-1 1/8	419 (500-1 1/8)
CIRCLING	520-1	459 (500-1)	520-1 1/2 459 (500-1 1/2)	700-2 639 (700-2)

MIRL Rwy 2-20 **⓪**

REIL Rwys 2 and 20 **⓪**

AK, 14 MAY 2026 to 09 JUL 2026

AK, 14 MAY 2026 to 09 JUL 2026