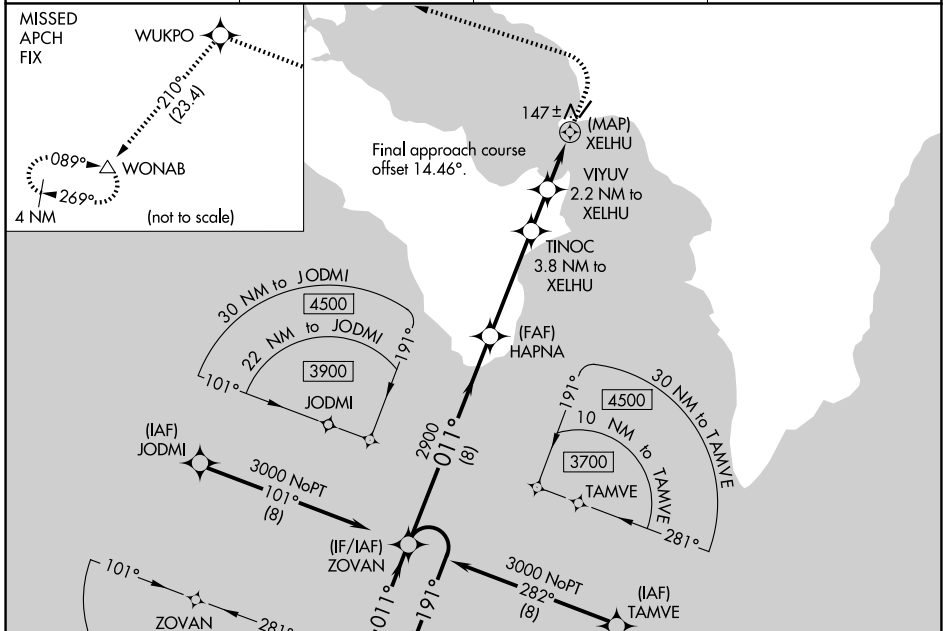


APP CRS	Rwy Ldg	<b>4000</b>
<b>011°</b>	TDZE	<b>62</b>
	Apt Elev	<b>62</b>

# RNAV (GPS) RWY 3

GOLOVIN (GLV) (PAGL)

RNP APCH.		MISSED APPROACH: Climb to 500 then climbing left turn to 3000 direct WUKPO and on track 210° to WONAB and hold.	
<p>▼ Circling NA southeast of Rwy 3-21.                  ▲ Rwy 3 helicopter visibility reduction below ¾ SM NA.</p>		AWOS-3P <b>135.75</b>	ANCHORAGE CENTER <b>133.3 290.4</b>
		NOME RADIO <b>122.05</b>	CTAF <b>122.9 0</b>



ELEV	62	TDZE	62
------	----	------	----

VGSI and descent angles not coincident (VGSI Angle 3.00/TCH 26).

4 NM Holding Pattern

6000 ← 191° — 011° —→ 3000

2900

3.14° TCH 40

1580

1040

XELHU

8 NM — 4 NM — 1.6 NM — 2.2 NM — 0.7 NM

CATEGORY	A	B	C	D
RNAV MDA	400-1 338 (400-1)			
CIRCLING	460-1 398 (400-1)	520-1 458 (500-1)	680-1¾ 618 (700-1¾)	1000-3 938 (1000-3)

MIRL Rwy 3-21 0

AK, 14 MAY 2026 to 09 JUL 2026

AK, 14 MAY 2026 to 09 JUL 2026