

WAAS CH 81845 W18A	APP CRS 181°	Rwy Ldg TDZE Apt Elev	3381 299 299
--	------------------------	-----------------------------	---

RNAV (GPS) RWY 18

HUGHES (HUS) (PAHU)

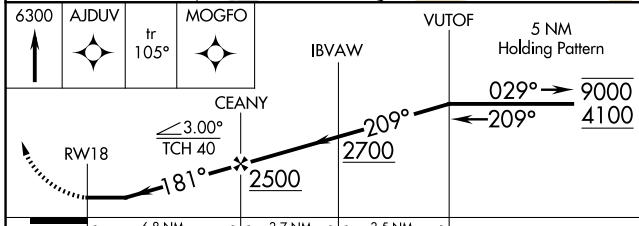
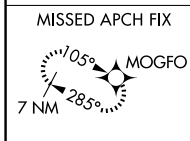
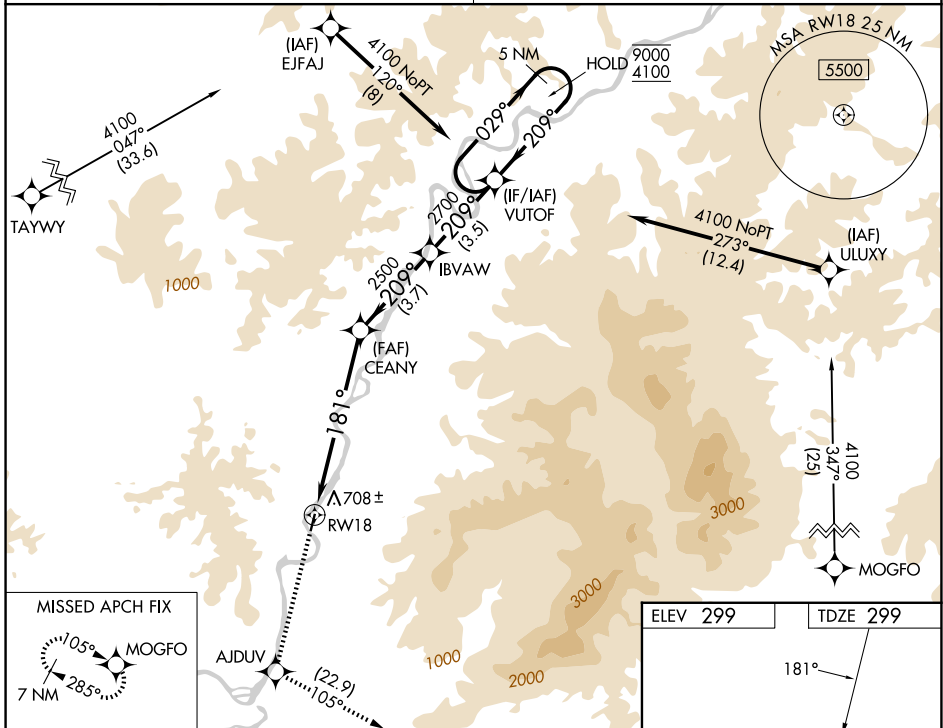
RNP APCH-GPS.

Procedure NA at night. Circling NA west of Rwy 18-36.
Rwy 18 helicopter visibility reduction below 1 SM NA.
 Use Indian Mountain LRRS altimeter setting. When Indian Mountain LRRS altimeter setting not received, procedure NA.

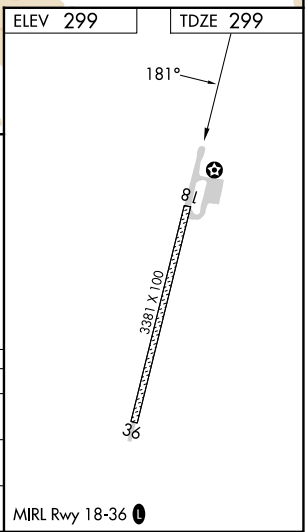
MISSED APPROACH: Climb to 6300 direct AJDUV and on track 105° to MOGFO and hold, continue climb-in-hold to 6300.

ANCHORAGE CENTER
124.6 352

CTAF
122.9



CATEGORY	A	B	C	D
LP MDA	1120-1 821 (900-1)	1120-1¼ 821 (900-1¼)	1120-2½ 821 (900-2½)	NA
RNAV MDA	1180-1¼ 881 (900-1¼)	1180-2½ 881 (900-2½)	1180-2½ 881 (900-2½)	NA
CIRCLING	1260-1¼ 961 (1000-1¼)	1360-1½ 1061 (1100-1½)	1580-3 1281 (1300-3)	NA



AK, 14 MAY 2026 to 09 JUL 2026

AK, 14 MAY 2026 to 09 JUL 2026