

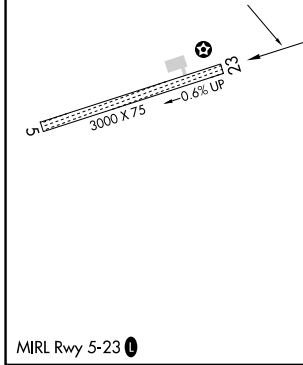
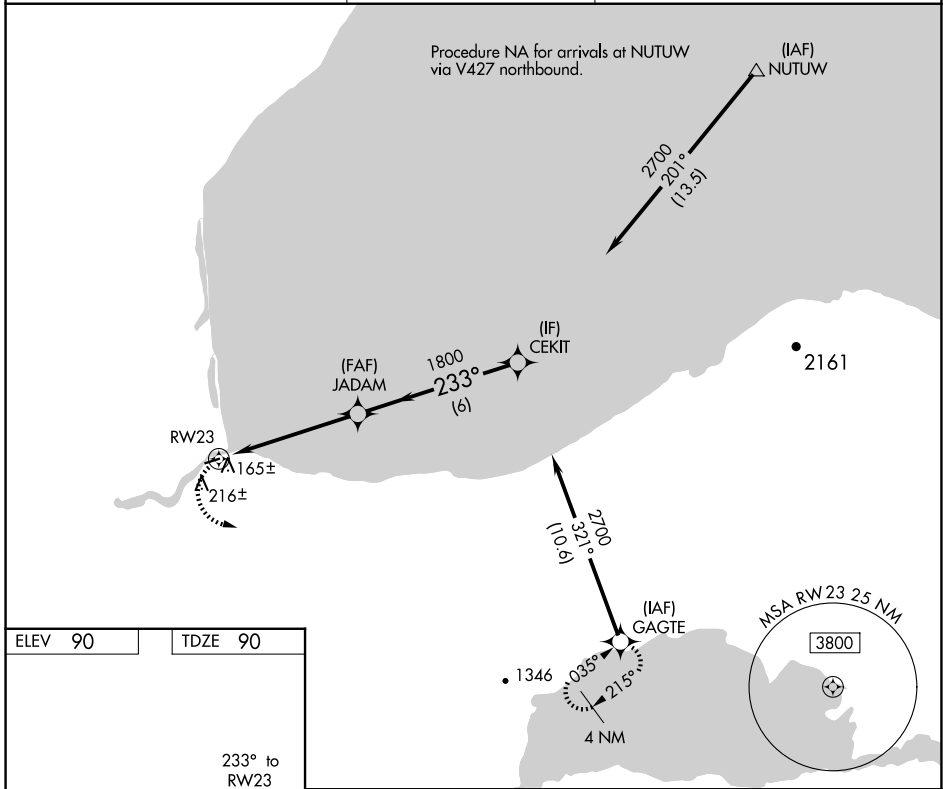
APP CRS 233°	Rwy Idg TDZE Apt Elev	3000 90 90
------------------------	-----------------------------	---------------------------------------

RNAV (GPS) RWY 23

IGIUGIG (IGG)(PAIG)

RNP APCH-GPS.	MISSED APPROACH: Climbing left turn to 4000 direct GAGTE and hold.
<p>▼ ▲</p> If local altimeter setting not received, use Iliamna altimeter setting and increase all MDAs 120 feet.	

AWOS-3P 119.925	ANCHORAGE CENTER 118.8	CTAF 122.8
---------------------------	----------------------------------	----------------------



4000	GAGTE	* VDP NA with Iliamna altimeter setting.	CEKIT
		JADAM	2700
		* 1.3 NM to RWY 23	Procedure Turn NA
		RWY 23	1800
		3.04° TCH 40	
		1.3	3.9 NM
			6 NM
CATEGORY	A	B	C
LNAV MDA	440-1	350 (400-1)	NA
CIRCLING	580-1 490 (500-1)	660-1 570 (600-1)	NA

AK, 14 MAY 2026 to 09 JUL 2026

AK, 14 MAY 2026 to 09 JUL 2026