

APP CRS	Rwy Ldg	4001
327°	TDZE	24
	Apt Elev	24

RNAV (GPS) RWY 33

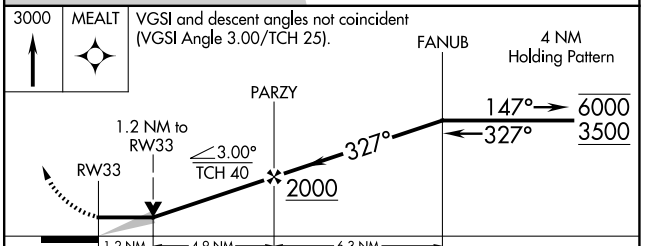
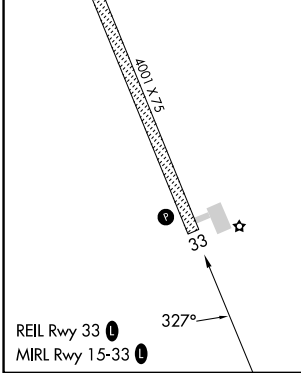
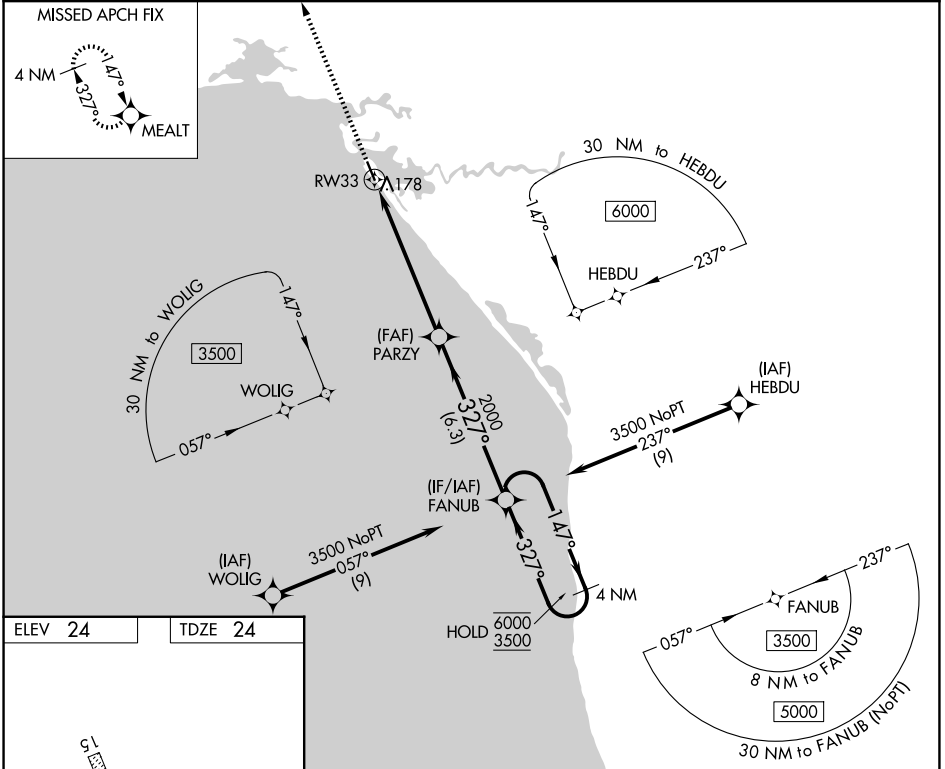
SHAKTOOLIK (2C7) (PFSH)

RNP APCH - GPS.

⚠ When local altimeter setting not received, use Unalakleet altimeter setting and increase all MDA 80 feet and increase LNAV Cat C and D and Circling Cat D visibility ½ SM.

MISSED APPROACH: Climb to 3000 direct MEALT and hold.

AWOS-3P 124.175	ANCHORAGE CENTER 135.7 335.5	NOME RADIO 122.3	UNICOM 122.8 (CTAF) 0
---------------------------	--	----------------------------	---------------------------------



CATEGORY	A	B	C	D
LNAV MDA	440-1	416 (500-1)	440-1½	416 (500-1½)
CIRCLING	480-1	456 (500-1)	480-1½ 456 (500-1½)	740-2¼ 716 (800-2¼)

AK, 14 MAY 2026 to 09 JUL 2026

AK, 14 MAY 2026 to 09 JUL 2026