

WAAS CH <b>40126</b> <b>W28A</b>	APP CRS <b>284°</b>	Rwy Ldg TDZE Apt Elev	<b>4001</b> <b>205</b> <b>205</b>
--	------------------------	-----------------------------	---

# RNAV (GPS) RWY 28

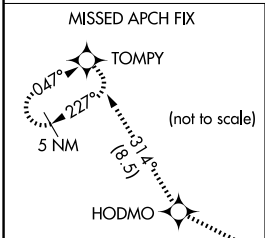
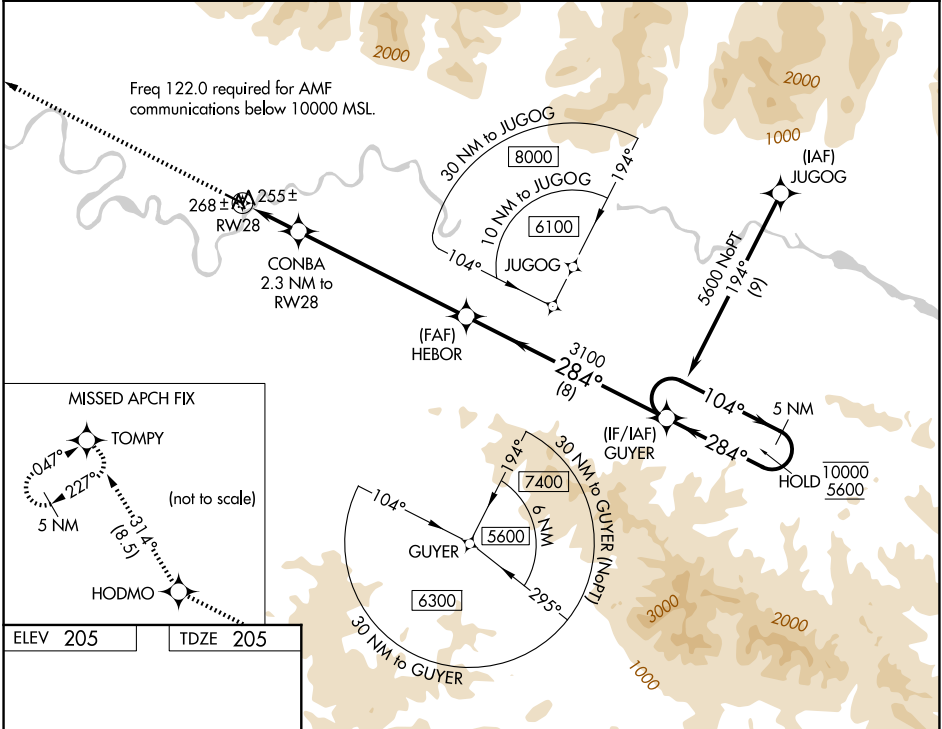
SHUNGNAK (SHG)(PAGH)

RNP APCH - GPS.

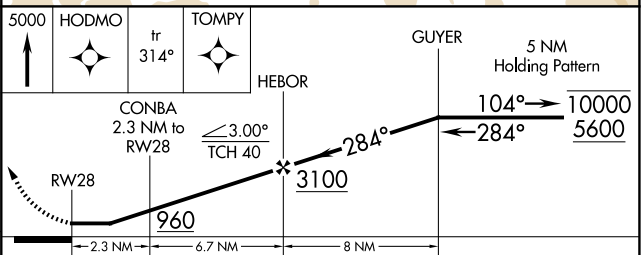
Rwy 28 helicopter visibility reduction below 1 SM NA.  
 Straight-in Rwy 28 NA at night, Circling Rwy 28 NA at night.  
 -32°C

MISSED APPROACH: Climb to 5000 direct HODMO and on track 314° to TOMPY and hold, continue climb-in-hold to 5000.

AWOS-3P <b>118.525</b>	ANCHORAGE CENTER <b>119.2</b>	KOTZEBUE RADIO <b>122.0</b>	CTAF <b>122.7</b>
---------------------------	----------------------------------	--------------------------------	----------------------



ELEV 205	TDZE 205
----------	----------



CATEGORY	A	B	C	D
LP MDA	540-1	335 (400-1)		NA
LNAV MDA	540-1	335 (400-1)		NA
CIRCLING	600-1 395 (400-1)	660-1 455 (500-1)	660-1½ 455 (500-1½)	NA

MIRL Rwy 10-28

SHUNGNAK, ALASKA  
Amdt 4 31OCT24

66°53'N-157°10'W

# SHUNGNAK (SHG)(PAGH) RNAV (GPS) RWY 28

AK, 14 MAY 2026 to 09 JUL 2026

AK, 14 MAY 2026 to 09 JUL 2026