

(MUJUD1.MUJUD) 23278

# MUJUD ONE DEPARTURE (RNAV)

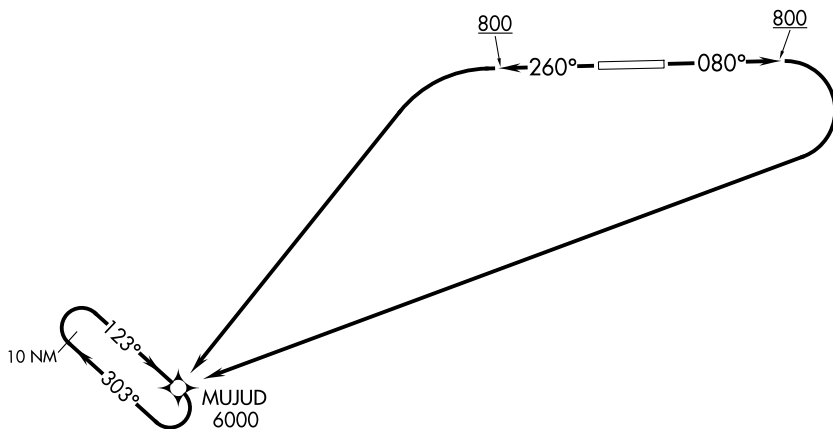
AL-10174 (FAA)

TELLER (TER)(PATE)  
TELLER, ALASKA

**TOP ALTITUDE:  
ASSIGNED BY ATC**

RNAV 1 - GPS.

ANCHORAGE CENTER  
133.3 290.4  
AWOS-3P  
118.375  
NOME RADIO  
135.6

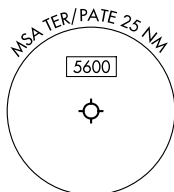


### TAKEOFF MINIMUMS

Rwy 26: Standard.

Rwy 8: Standard with minimum climb of 285' per NM to 1700.

NOTE: Chart not to scale.



### DEPARTURE ROUTE DESCRIPTION

TAKEOFF RUNWAY 8: Climb on heading 080° to 800, then climbing right turn direct MUJUD, thence. . . .

TAKEOFF RUNWAY 26: Climb on heading 260° to 800, then climbing left turn direct MUJUD, thence. . . .

. . . .continue climb in MUJUD holding pattern to at or above 6000 then maintain ATC assigned altitude before proceeding on course.

# MUJUD ONE DEPARTURE (RNAV)

(MUJUD1.MUJUD) 05OCT23

TELLER, ALASKA  
TELLER (TER)(PATE)

AK, 14 MAY 2026 to 09 JUL 2026

AK, 14 MAY 2026 to 09 JUL 2026