

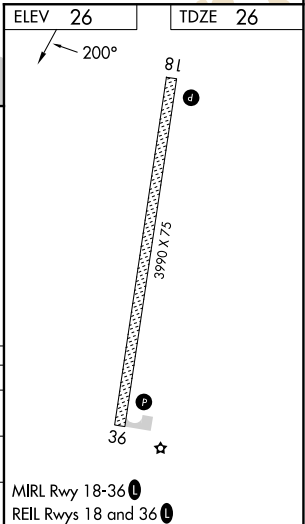
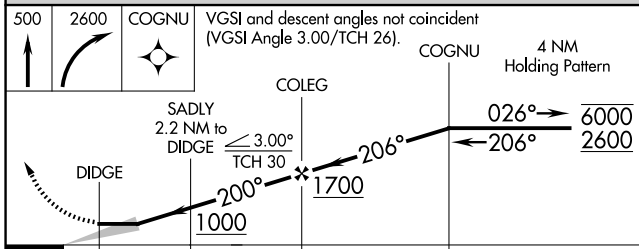
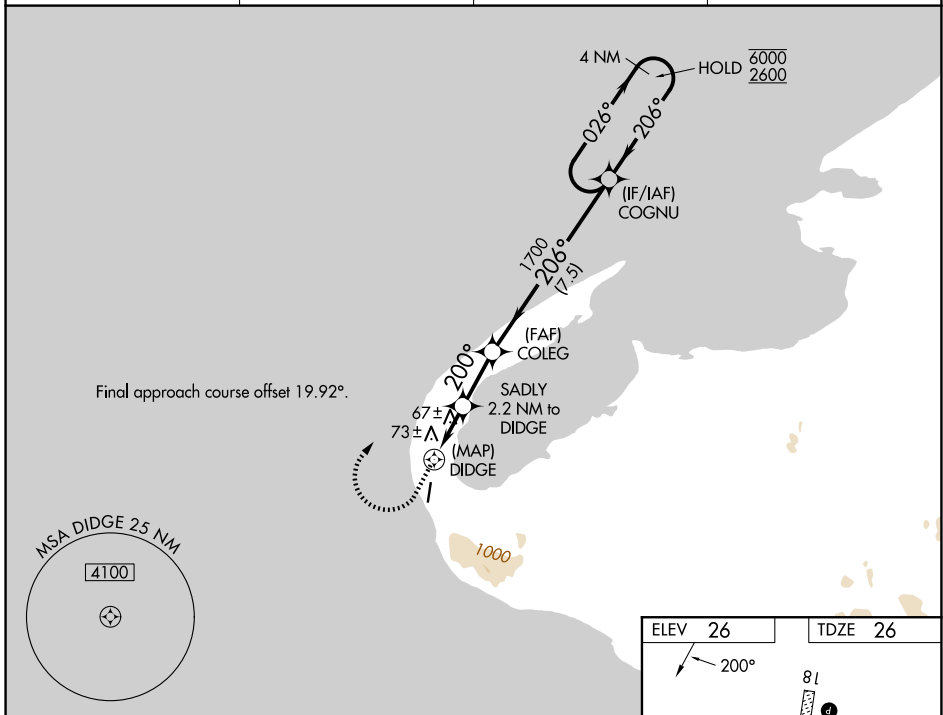
WAAS CH 57942 W18A	APP CRS 200°	Rwy Ldg TDZE Apt Elev	3990 26 26
--	------------------------	-----------------------------	---------------------------------------

RNAV (GPS) RWY 18

WALES (IWK) (PAIW)

RNP APCH. -26°C Circling NA east of Rwy 18-36.		MISSED APPROACH: Climb to 500 then climbing right turn to 2600 direct COG NU and hold.	
---	--	--	--

AWOS-3P 118.525	ANCHORAGE CENTER 133.3 290.4	NOME RADIO 122.6	CTAF 123.0
---------------------------	--	----------------------------	----------------------



500	2600	COG NU	VGSI and descent angles not coincident (VGSI Angle 3.00/TCH 26).	
↑	↘	✦	COG NU	4 NM Holding Pattern
DIDGE		SADLY 2.2 NM to DIDGE	COLEG	COG NU
0.8		2.2 NM	2.2 NM	7.5 NM
CATEGORY	A	B	C	D
LP MDA	340-1 314 (400-1)			
LNAV MDA	640-1 614 (700-1)		640-1¾ 614 (700-1¾)	
CIRCLING	640-1 614 (700-1)		640-2 614 (700-2)	

AK, 14 MAY 2026 to 09 JUL 2026

AK, 14 MAY 2026 to 09 JUL 2026