

APP CRS	Rwy Ldg	<b>4001</b>
<b>230°</b>	TDZE	<b>448</b>
	Apt Elev	<b>448</b>

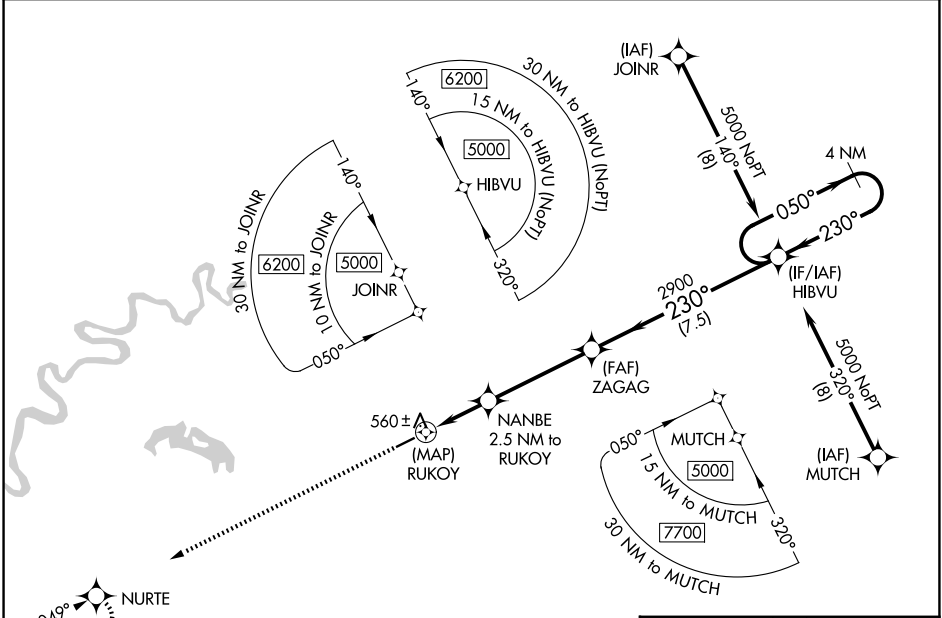
# RNAV (GPS) RWY 23

NIKOLAI (FSP)(PAFS)

RNP APCH.  
 ▼  
 Rwy 23 helicopter visibility reduction below 3/4 SM NA.

MISSED APPROACH: Climb to 3000 direct NURTE and hold.

AWOS-3P <b>118.325</b>	ANCHORAGE CENTER <b>128.1 353.8</b>	CTAF <b>122.8</b>
---------------------------	----------------------------------------	----------------------



AK, 14 MAY 2026 to 09 JUL 2026

AK, 14 MAY 2026 to 09 JUL 2026

ELEV 448	TDZE 448			
3000	NURTE	VGSI and descent angles not coincident (VGSI Angle 3.20/TCH 28).	HIBVU	4 NM Holding Pattern
CATEGORY	A	B	C	D
RNAV MDA	820-1 372 (400-1)			
CIRCLING	860-1 412 (500-1)	900-1 452 (500-1)	900-1½ 452 (500-1½)	1000-2 552 (600-2)

