

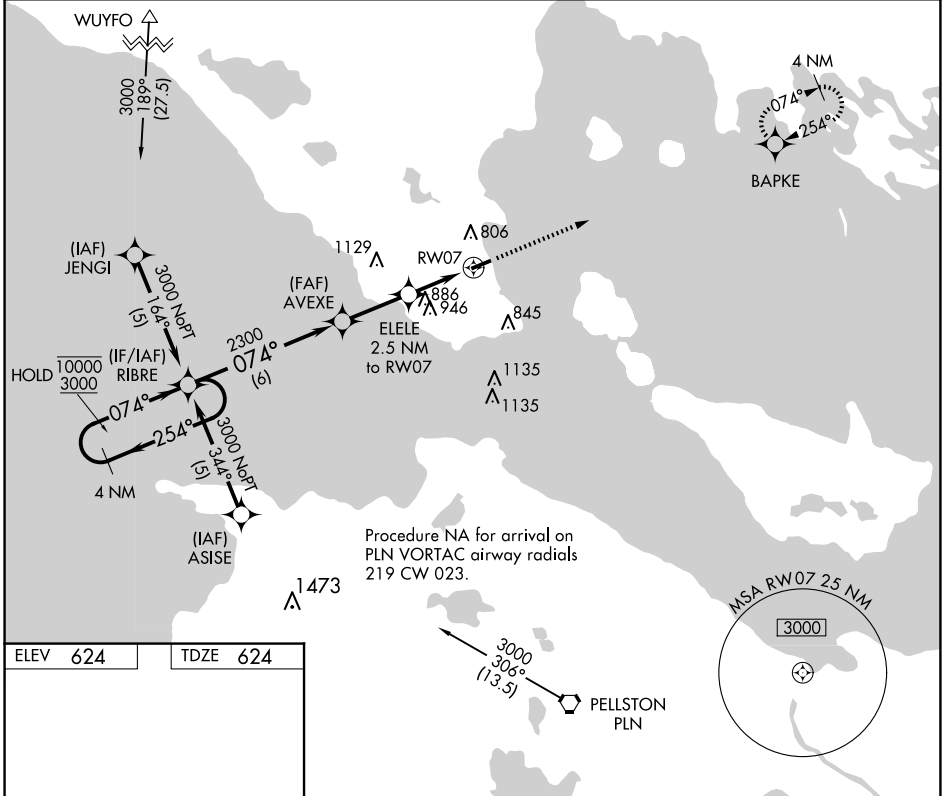
APP CRS	Rwy Idg	<b>3800</b>
<b>074°</b>	TDZE	<b>624</b>
	Apt Elev	<b>624</b>

# RNAV (GPS) RWY 7

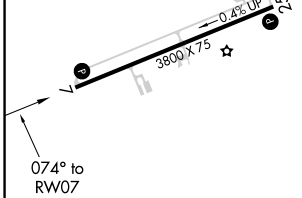
MACKINAC COUNTY (83D)

RNP APCH.	Straight-in Rwy 07 NA at night, Circling Rwy 07 NA at night. Rwy 07 helicopter visibility reduction below 1 SM NA. Circling NA at night south of Rwy 07-25.	MISSED APPROACH: Climb to 3000 direct BAPKE and hold.
⚠ NA		

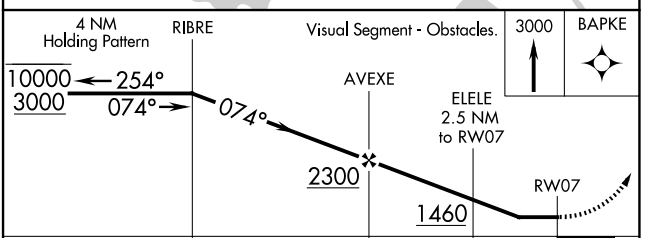
MINNEAPOLIS CENTER <b>134.6 354.05</b>	UNICOM <b>122.7 (CTAF) 0</b>
---	---------------------------------



ELEV 624	TDZE 624
----------	----------



MIRL Rwy 7-25	REIL Rws 7 and 25
---------------	-------------------



CATEGORY	A	B	C	D
LNAV MDA	1200-1	576 (600-1)	1200-1½ 576 (600-1½)	NA
CIRCLING	1260-1	636 (700-1)	1300-2 676 (700-2)	NA

EC-1, 14 MAY 2026 to 11 JUN 2026

EC-1, 14 MAY 2026 to 11 JUN 2026