

| | | |
|-------------|----------|-------------|
| APP CRS | Rwy Ldg | 6004 |
| 168° | TDZE | 364 |
| | Apt Elev | 364 |

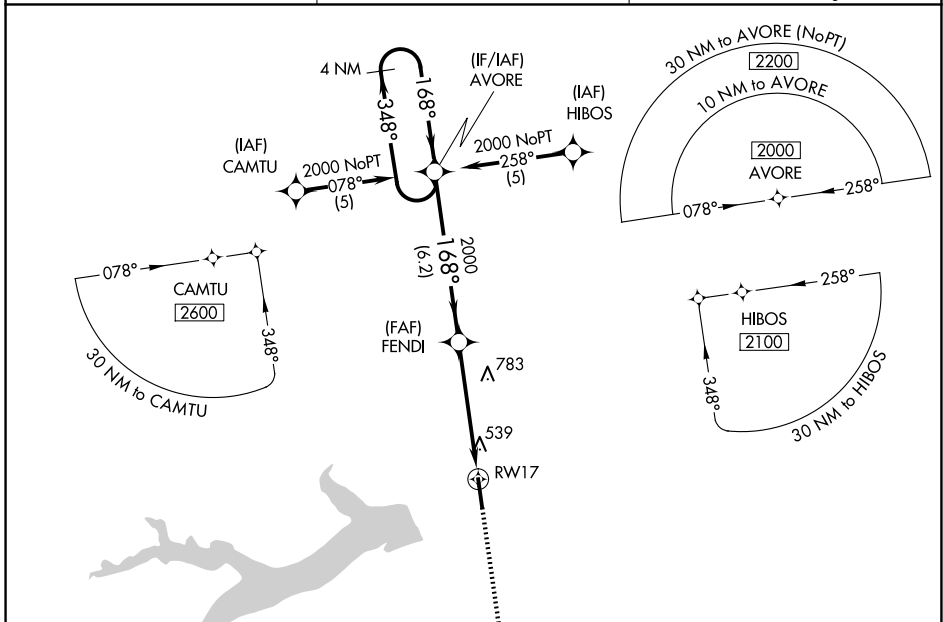
RNAV (GPS) RWY 17

MOUNT PLEASANT RGNL (OSA)

⚠ For uncompensated Baro-VNAV systems, LNAV/VNAV NA below -15°C (5°F) or above 48°C (118°F). DME/DME RNP-0.3 NA. When local altimeter setting not received, use Paris altimeter setting and increase all DA/MDA 120 feet, increase LNAV/VNAV visibilities ¼ mile all Cats, LNAV visibilities ½ mile all Cats, and circling visibilities ½ mile all Cats. VDP and Baro-VNAV NA when using Paris altimeter setting.

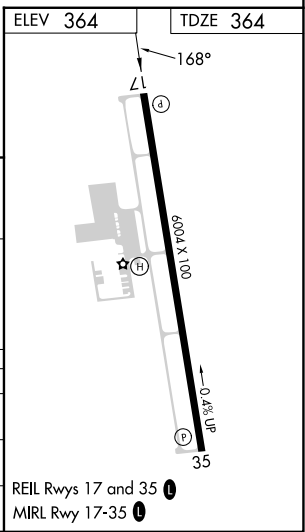
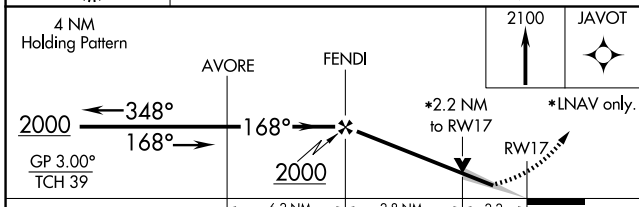
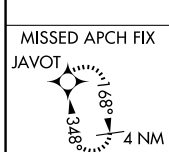
ⓘ MISSED APPROACH: Climb to 2100 direct JAVOT and hold.

| | | |
|--------------------------|--|---------------------------------|
| AWOS-3 119.775 | FORT WORTH CENTER 132.025 317.75 | UNICOM 122.7 (CTAF) 0 |
|--------------------------|--|---------------------------------|



SC-2, 14 MAY 2026 to 11 JUN 2026

SC-2, 14 MAY 2026 to 11 JUN 2026



| | | | | |
|--------------|--------------------|--------------------|--------------------|--------------------|
| CATEGORY | A | B | C | D |
| LNAV/VNAV DA | 890-2 526 (600-2) | | | |
| LNAV MDA | 1100-1 736 (800-1) | 1100-2 736 (800-2) | 1100-2 736 (800-2) | 1100-2 736 (800-2) |
| CIRCLING | 1100-1 736 (800-1) | 1100-2 736 (800-2) | 1100-2 736 (800-2) | 1100-2 736 (800-2) |