

| | | | |
|--|------------------------|-----------------------------|---|
| WAAS CH 62838 W05A | APP CRS 051° | Rwy Ldg TDZE Apt Elev | 4003 954 964 |
|--|------------------------|-----------------------------|---|

RNAV (GPS) RWY 5

SEARCY COUNTY (4A5)

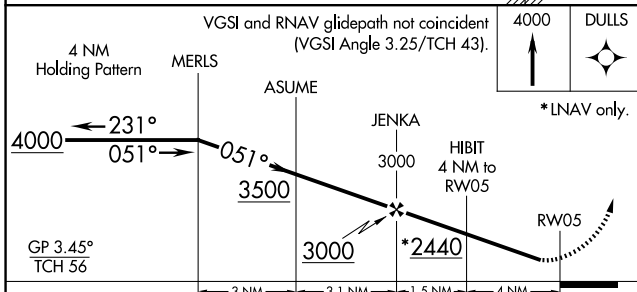
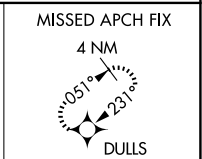
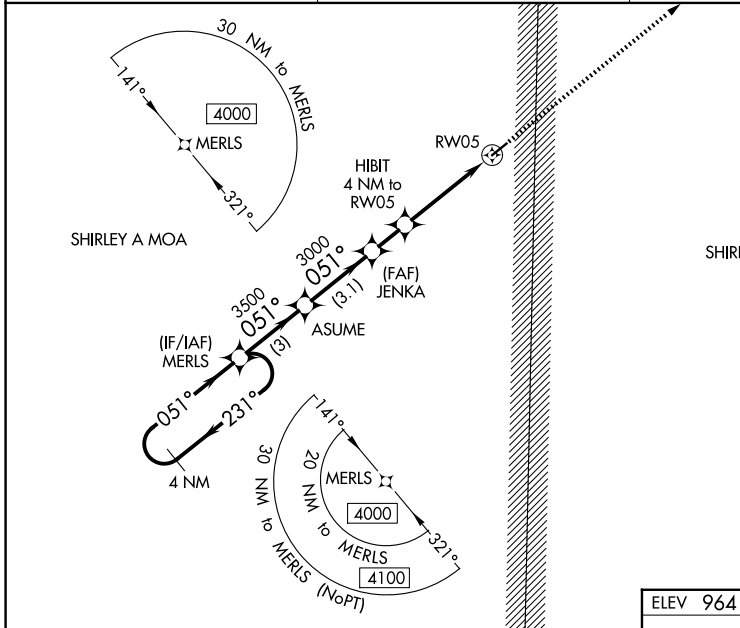
▽ DME/DME RNP-0.3 NA. Circling NA SE of Rwy 5-23. Night Landing: Rwy 23 NA.
△ **NA** Baro-VNAV NA. Use Flippin altimeter setting; when not received, use Harrison altimeter setting and increase all Cats LPV DA to 1396 and visibility 1/8 mile, LNAV/VNAV all Cats DA to 1981, and all MDA 60 feet. Helicopter visibility reduction below 3/4 SM NA.

MISSED APPROACH:
Climb to 4000 direct DULLS and hold.

FLP AWOS-3
132.075

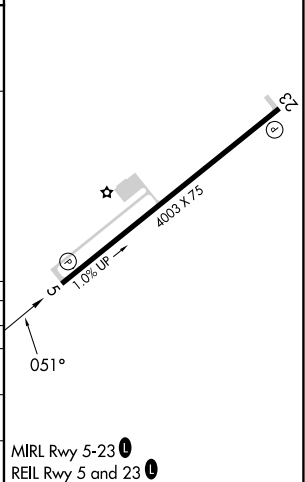
MEMPHIS CENTER
126.85 281.55

CTAF
122.9



| | |
|----------|----------|
| ELEV 964 | TDZE 954 |
|----------|----------|

| CATEGORY | A | B | C | D |
|--------------|--------------------------|--------------------------|------------------------|----|
| LPV DA | 1353-1¼ | 399 (400-1¼) | | NA |
| LNAV/VNAV DA | 1938-3 | 984 (1000-3) | | NA |
| LNAV MDA | 1920-1¼ 966 (1000-1¼) | 1920-1½ 966 (1000-1½) | 1920-3 966 (1000-3) | NA |
| CIRCLING | 1920-1¼ 956 (1000-1¼) | 1920-1½ 956 (1000-1½) | 1920-3 956 (1000-3) | NA |



SC-1, 14 MAY 2026 to 11 JUN 2026

SC-1, 14 MAY 2026 to 11 JUN 2026