

WAAS CH <b>69637</b> <b>W01A</b>	APP CRS <b>012°</b>	Rwy Ldg <b>3202</b> TDZE <b>235</b> Apt Elev <b>236</b>
--	------------------------	---

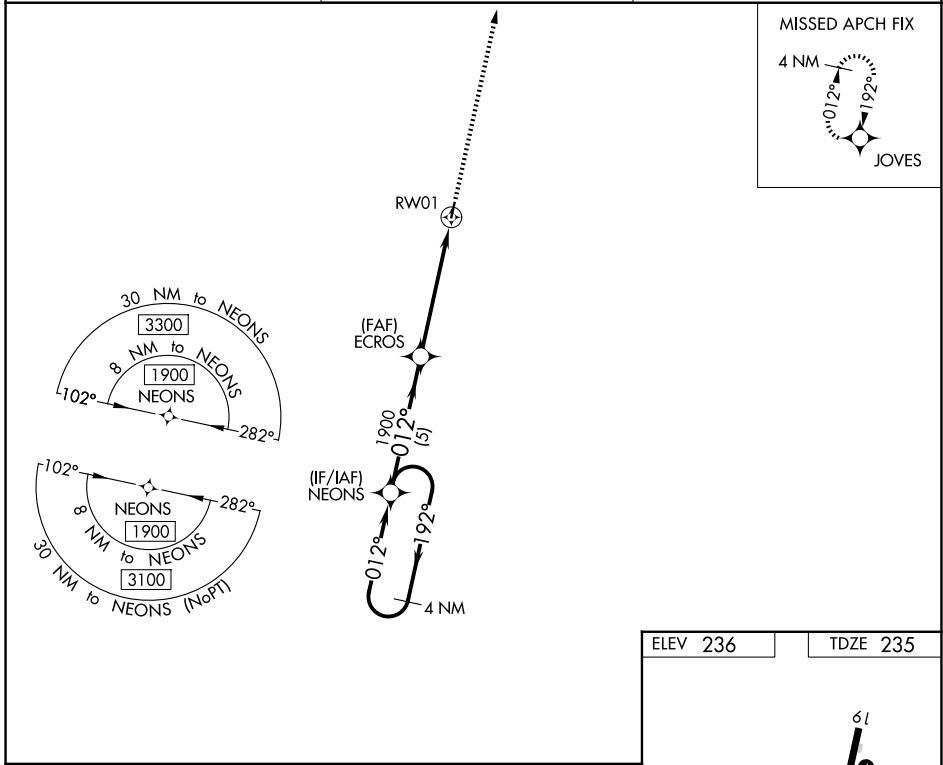
# RNAV (GPS) RWY 1

SHERIDAN-GRANT COUNTY RGNL (9M8)

**⚠ NA** DME/DME RNP-0.3 NA. Helicopter visibility reduction below 1 SM NA.  
 Night Landing: Rwy 1 NA. Use Pine Bluff altimeter setting, when not received, use Little Rock altimeter setting and increase all MDA 20 feet: increase LP and LNAV Cat C visibility 1/8 mile, and Circling Cat C visibility 1/4 mile.

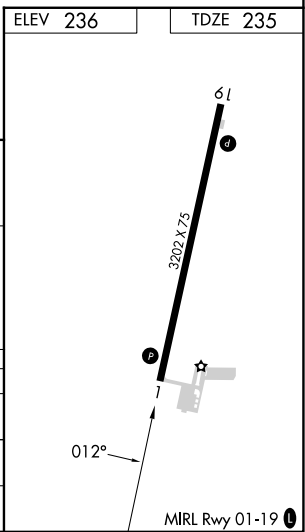
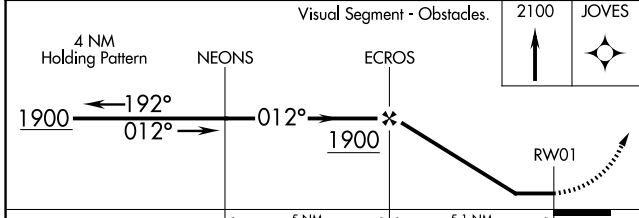
MISSED APPROACH: Climb to 2100 direct JOVES and hold.

PBF ASOS <b>120.775</b>	LITTLE ROCK APP CON <b>135.4 353.6</b>	UNICOM <b>122.8 (CTAF) 0</b>
----------------------------	---	---------------------------------



SC-1, 14 MAY 2026 to 11 JUN 2026

SC-1, 14 MAY 2026 to 11 JUN 2026



CATEGORY	A	B	C	D
LP MDA	760-1	525 (600-1)	760-1½ 525 (600-1½)	NA
LNAV MDA	800-1	565 (600-1)	800-1⅝ 565 (600-1⅝)	NA
CIRCLING	800-1 564 (600-1)	840-1 604 (700-1)	960-2 724 (800-2)	NA