

WAAS CH 63237 W19A	APP CRS 192°	Rwy Ldg 3202 TDZE 236 Apt Elev 236
--	------------------------	---

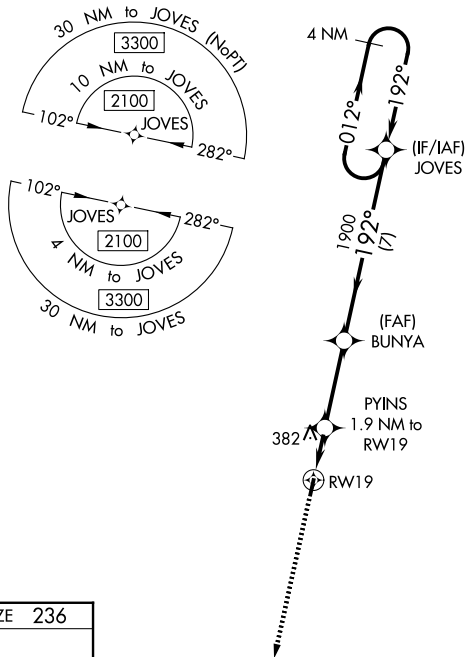
RNAV (GPS) RWY 19

SHERIDAN-GRANT COUNTY RGNL (9M8)

NA Baro-VNAV NA. DME/DME RNP-0.3 NA. Helicopter visibility reduction below 3/4 SM NA. Night landing: Rwy 1 NA. Use Pine Bluff altimeter setting, when not received, use Little Rock altimeter setting and increase all DA 5 feet and all MDA 20 feet: increase Circling Cat C visibility 1/4 mile.

MISSED APPROACH:
Climb to 1900 direct NEONS and hold.

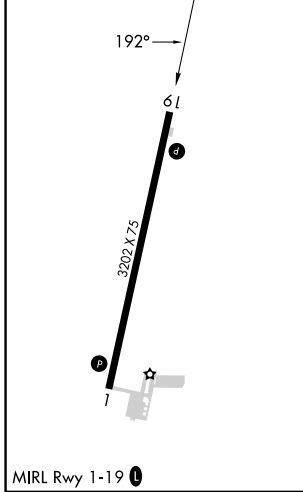
PBF ASOS 120.775	LITTLE ROCK APP CON 135.4 353.6	UNICOM 122.8 (CTAF)
----------------------------	---	-------------------------------



SC-1, 14 MAY 2026 to 11 JUN 2026

SC-1, 14 MAY 2026 to 11 JUN 2026

ELEV 236	TDZE 236
----------	----------



MIRL Rwy 1-19

1900	NEONS	VGSi and RNAV glidepath not coincident (VGSi Angle 3.25/TCH 43).		JOVES	4 NM Holding Pattern
	*LNAV only.	PYINS 1.9 NM to RW19	BUNYA 1900	192°	2100
		880*	1900		GP 3.00° TCH 40
		1.9 NM	3.2 NM	7 NM	
CATEGORY	A	B	C	D	
LPV DA	590-1 1/4	354 (400-1 1/4)		NA	
LNAV/VNAV DA	682-1 1/2	446 (500-1 1/2)		NA	
LNAV MDA	700-1	464 (500-1)	700-1 3/8 464 (500-1 3/8)	NA	
CIRCLING	740-1 504 (600-1)	840-1 604 (700-1)	960-2 724 (800-2)	NA	

SHERIDAN, ARKANSAS
Orig 10DEC15

34°20'N-92°21'W

RNAV (GPS) RWY 19