

APP CRS	Rwy Ldg	3398
033°	TDZE	2026
	Apt Elev	2032

RNAV (GPS) RWY 3

MARANA RGNL (AVQ)

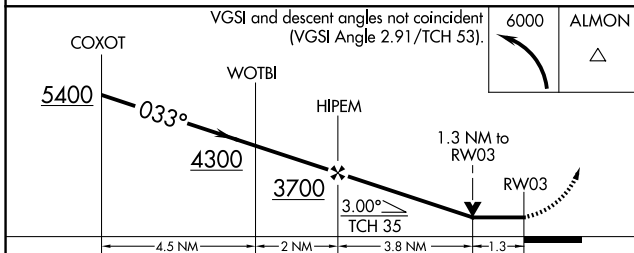
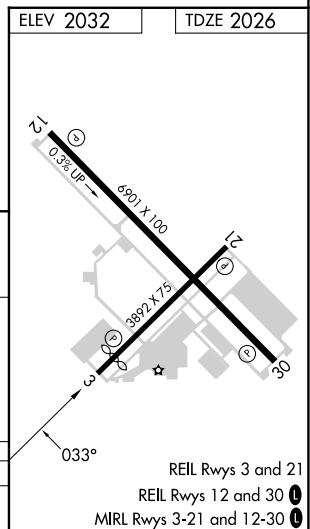
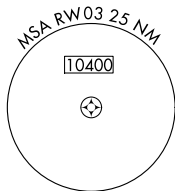
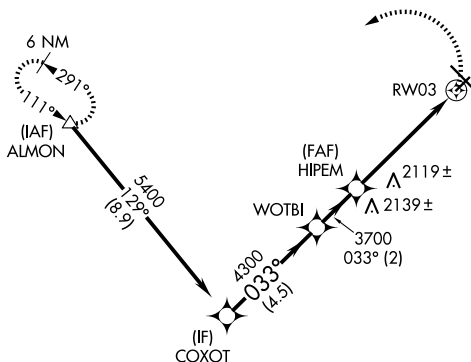
RNP APCH.

▼ VDP NA when using Ryan Fld altimeter setting. Rwy 3 helicopter visibility reduction below 3/4 SM NA. When local altimeter setting not received, use Ryan Field altimeter setting and increase all MDAs 100 feet and LNAV Cat C visibility 1/4 SM.

MISSED APPROACH: Climbing left turn to 6000 direct ALMON and hold, continue climb-in-hold to 6000.

AWOS-3 118.375	TUCSON APP CON 119.4 318.1	UNICOM 123.0 (CTAF) 0
--------------------------	--------------------------------------	---------------------------------

Procedure NA for arrivals at ALMON on V66-105 westbound.



CATEGORY	A	B	C	D
LNAV MDA	2480-1	454 (500-1)	2480-1 3/8 454 (500-1 3/8)	NA

SW-4, 14 MAY 2026 to 11 JUN 2026

SW-4, 14 MAY 2026 to 11 JUN 2026