

WAAS CH 97436 W17A	APP CRS 173°	Rwy Ldg TDZE Apt Elev	4497 1387 1387
--	------------------------	-----------------------------	---

RNAV (GPS) RWY 17

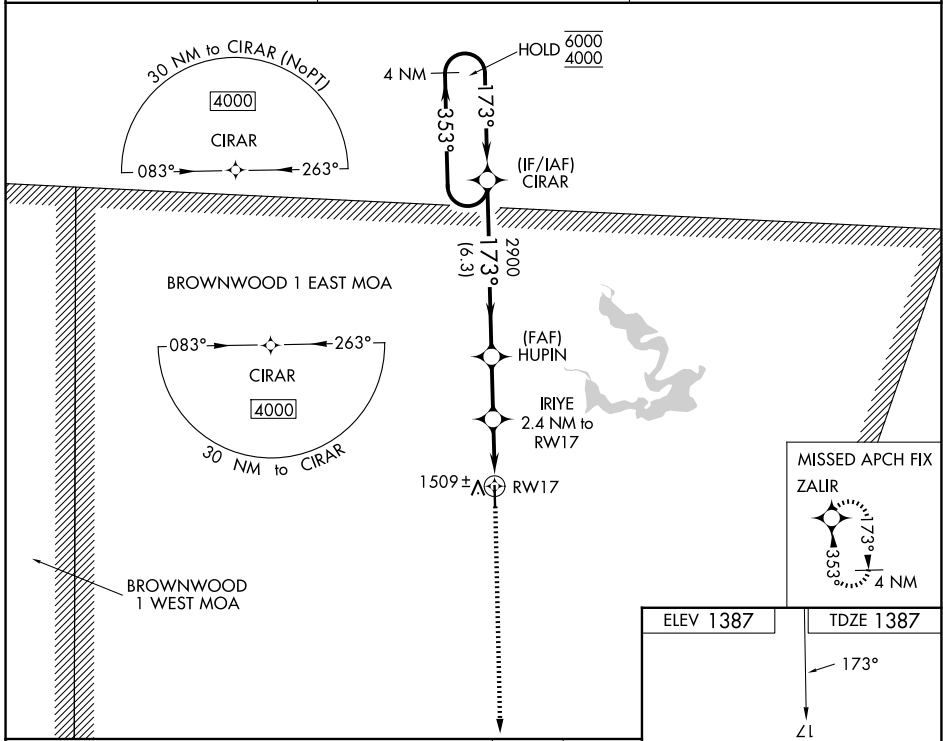
COMANCHE COUNTY-CITY (MKN)

RNP APCH - GPS.

⚠ Circling to Rwy 35 NA at night. For uncompensated Baro-VNAV systems, LNAV/VNAV NA below -17°C or above 54°C. Baro-VNAV and VDP NA when using BWD altimeter setting. When local altimeter setting not received, use BWD altimeter setting and increase all DA 46 feet and all MDAs 60 feet.

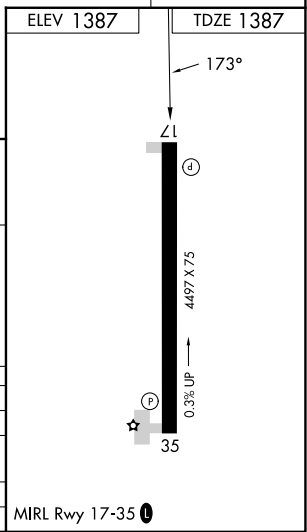
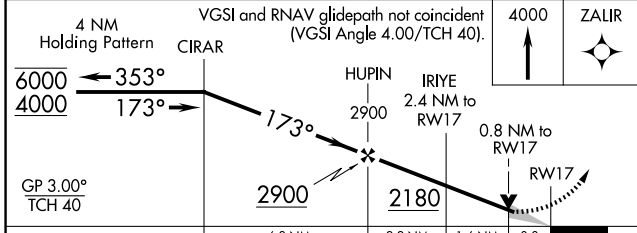
MISSED APPROACH: Climb to 4000 direct ZALIR and hold, continue climb-in-hold to 4000.

AWOS-3 118.575	FORT WORTH CENTER 135.375 354.05	UNICOM 123.075 (CTAF) 0
--------------------------	--	-----------------------------------



SC-3, 14 MAY 2026 to 11 JUN 2026

SC-3, 14 MAY 2026 to 11 JUN 2026



CATEGORY	A	B	C	D
LPV DA	1637-1	250 (300-1)		NA
LNAV/VNAV DA	1690-1	303 (400-1)		NA
LNAV MDA	1760-1	373 (400-1)		NA
CIRCLING	2120-1	733 (800-1)		NA

MIRL Rwy 17-35 0