

WAAS CH 61136 W35A	APP CRS 353°	Rwy Ldg TDZE 1384 Apt Elev 1387
--	------------------------	---

RNAV (GPS) RWY 35

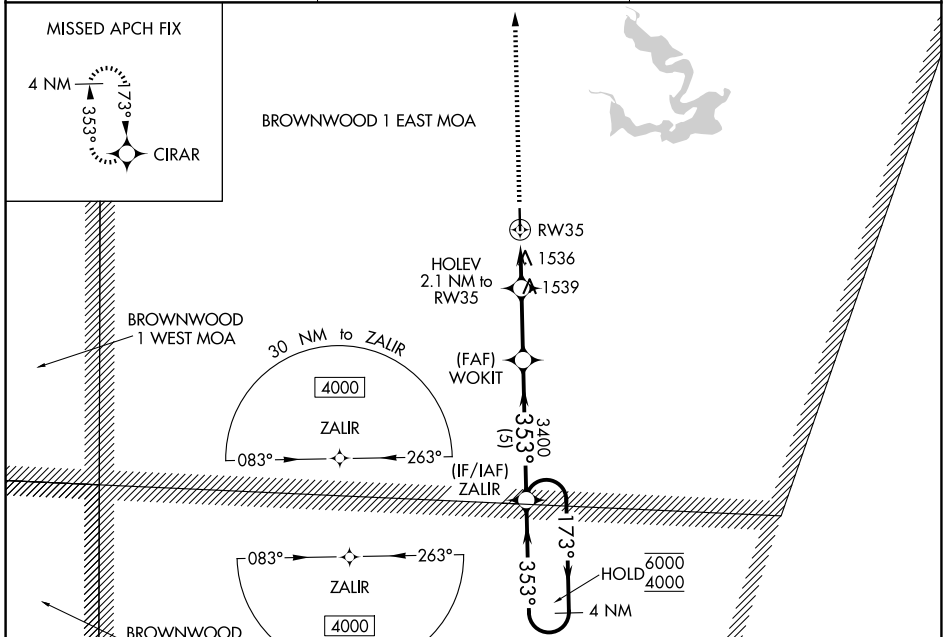
COMANCHE COUNTY-CITY (MKN)

RNP APCH - GPS.

▼ Rwy 35 helicopter visibility reduction below 1 SM NA. Rwy 35 Straight-In and Circling minimums NA at night. When local altimeter setting not received, use BWD altimeter setting and increase all MDA 60 feet.

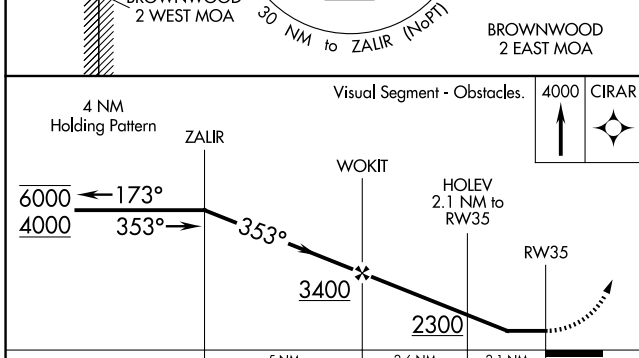
MISSED APPROACH: Climb to 4000 direct CIRAR and hold.

AWOS-3 118.575	FORT WORTH CENTER 135.375 354.05	UNICOM 123.075 (CTAF) 0
--------------------------	--	-----------------------------------

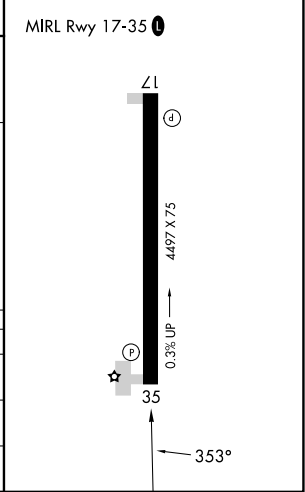


SC-3, 14 MAY 2026 to 11 JUN 2026

SC-3, 14 MAY 2026 to 11 JUN 2026



ELEV 1387	TDZE 1384
------------------	------------------



CATEGORY	A	B	C	D
LP MDA	1840-1	456 (500-1)		NA
LNAV MDA	1840-1	456 (500-1)		NA
CIRCLING	2120-1	733 (800-1)		NA