

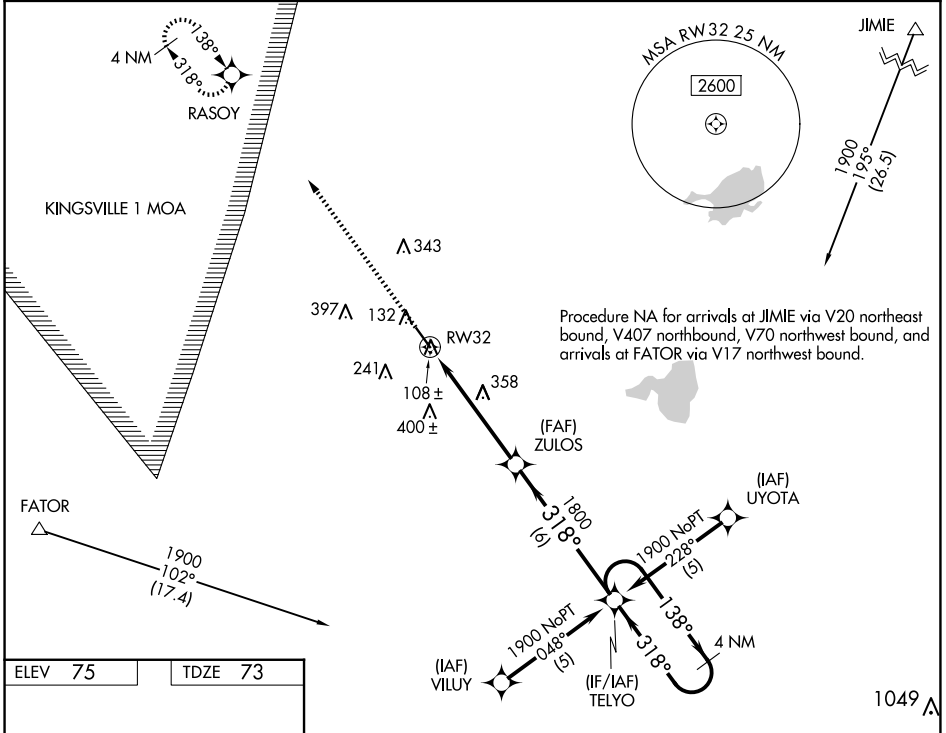
WAAS CH 70701 W32A	APP CRS 318°	Rwy Idg 5000 TDZE 73 Apt Elev 75
--	------------------------	---

RNAV (GPS) RWY 32

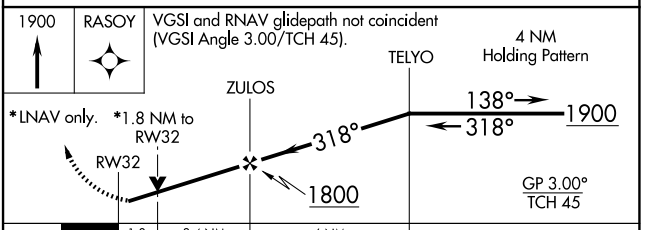
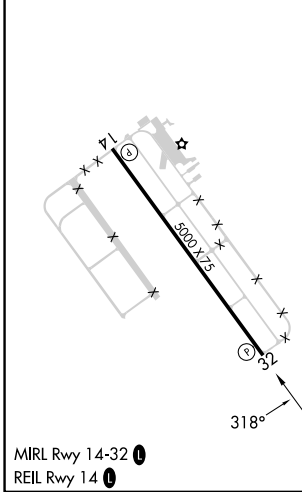
SOUTH TEXAS INTL AT EDINBURG (E.BG)

RNP APCH-GPS. ▼ Rwy 32 helicopter visibility reduction below 3/4 SM NA. ▲ For uncompensated Baro-VNAV systems LNAV/VNAV NA below -15°C or above 48°C.	MISSED APPROACH: Climb to 1900 direct RASOY and hold.
---	---

AWOS-3PT 118.025	VALLEY APP CON 126.55 377.2	UNICOM 122.8 (CTAF) 0
----------------------------	---------------------------------------	---------------------------------



ELEV 75	TDZE 73
---------	---------



CATEGORY	A	B	C	D
LPV DA		323-3/4	250 (300-3/4)	
LNAV/VNAV DA		361-1	288 (300-1)	
LNAV MDA	660-1	587 (600-1)	660-1 1/2 587 (600-1 1/2)	660-1 3/4 587 (600-1 3/4)
CIRCLING	660-1	585 (600-1)	760-2 685 (700-2)	760-2 1/4 685 (700-2 1/4)

SC-3, 14 MAY 2026 to 11 JUN 2026

SC-3, 14 MAY 2026 to 11 JUN 2026