

WAAS CH 82601 W32A	APP CRS 317°	Rwy Ldg 4999 TDZE 18 Apt Elev 18
--	------------------------	---

RNAV (GPS) RWY 32

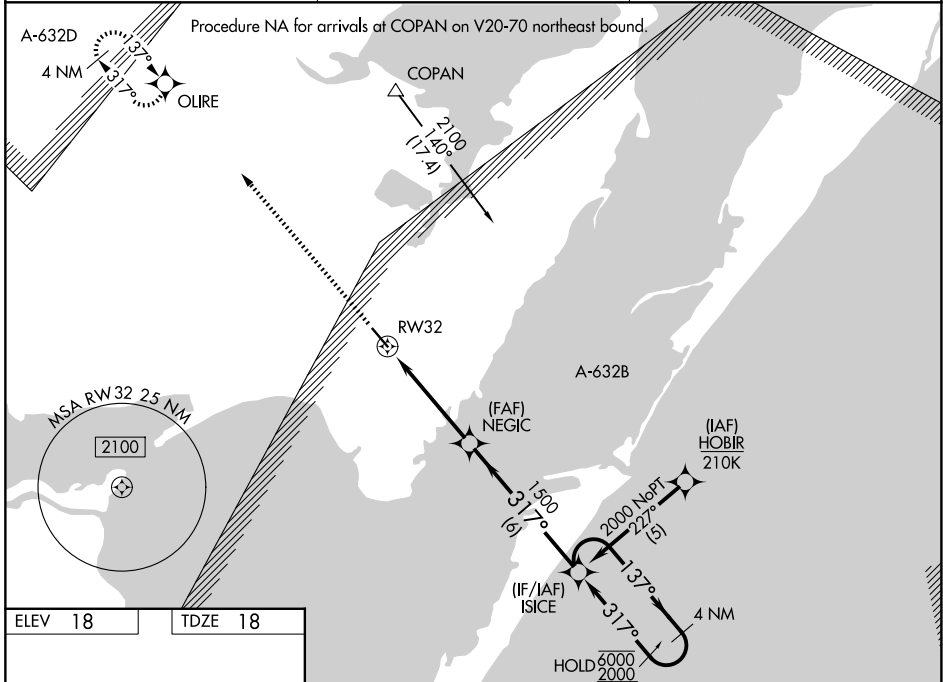
INGLESIDE RGNL (TFP)

RNP APCH - GPS.

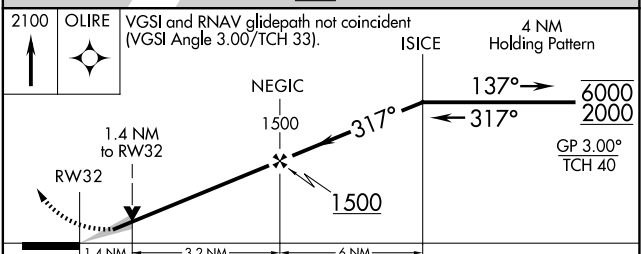
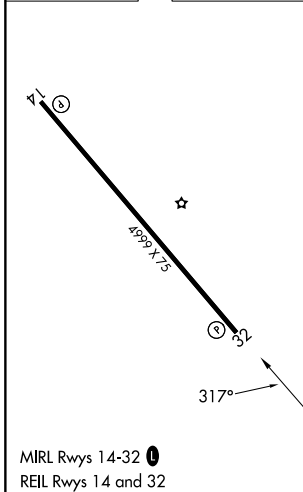
⚠ For uncompensated Baro-VNAV systems, LNAV/VNAV NA below -15°C or above 54°C.

MISSED APPROACH:
Climb to 2100 direct OLIRE and hold.

AWOS-3 118.775	CORPUS APP CON 120.9 348.725	UNICOM 122.7 (CTAF) 0
--------------------------	--	---------------------------------



ELEV 18	TDZE 18
---------	---------



CATEGORY	A	B	C	D
LPV DA	268-1		250 (300-1)	
LNAV/VNAV DA	405-1½		387 (400-1½)	
LNAV MDA	480-1	462 (500-1)	480-1¾	462 (500-1¾)
CIRCLING	520-1	502 (600-1)	860-2½ 842 (900-2½)	980-3 962 (1000-3)

SC-3, 14 MAY 2026 to 11 JUN 2026

SC-3, 14 MAY 2026 to 11 JUN 2026