

| | | |
|-------------|----------|-----------|
| APP CRS | Rwy Ldg | N/A |
| 333° | TDZE | N/A |
| | Apt Elev | 63 |

RNAV (GPS)-A

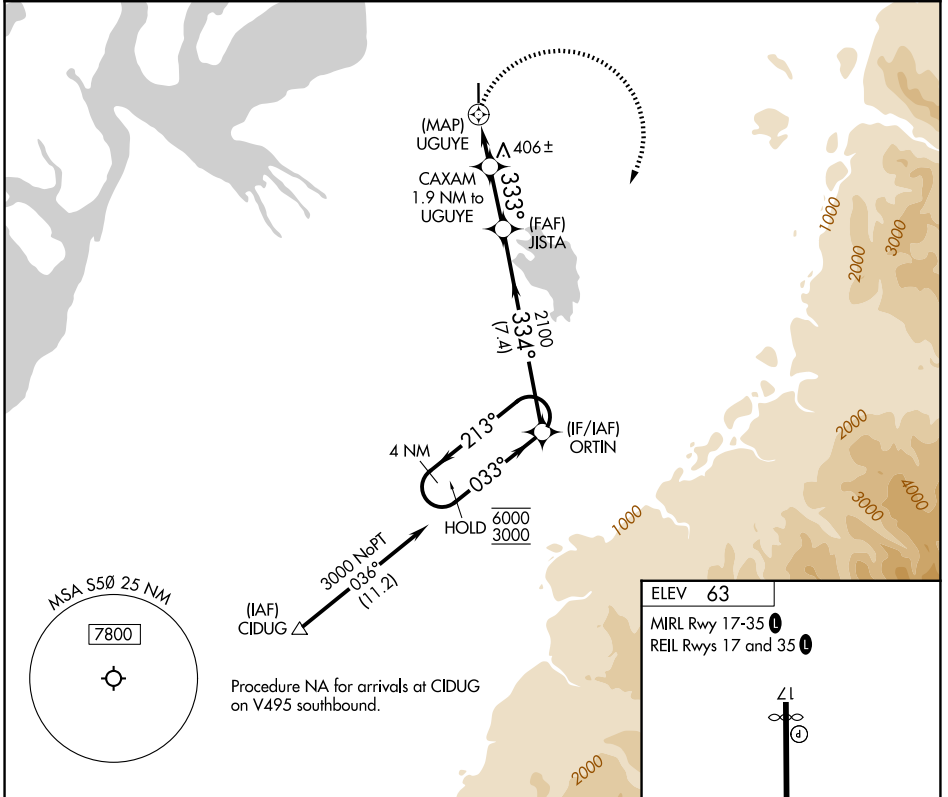
AUBURN MUNI (S50)

RNP APCH - GPS.

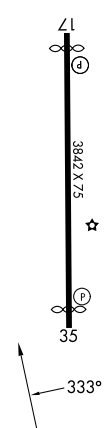
NA Circling NA west of Rwy 17-35. Rwy 17 and 35 helicopter visibility reduction below 1 SM NA. When Circling to Rwy 17, 35 at night, operational VGSI required, remain on or above VGSI glidepath until threshold. Use Seattle-Tacoma Intl altimeter setting. Procedure NA at night when VGSI inoperative.

MISSED APPROACH: Climbing right turn to 3000 direct ORTIN and hold.

| | | |
|--------------------------|----------------------------------|---------------------------------|
| SEA ASOS 118.0 | SEATTLE APP CON 123.85 | UNICOM 122.975 (CTAF) |
|--------------------------|----------------------------------|---------------------------------|



| |
|--------------------|
| ELEV 63 |
| MIRL Rwy 17-35 |
| REIL Rws 17 and 35 |



| | | | |
|----------|------------------------|--------------------------|----------------------|
| 3000 | ORTIN | ORTIN | 4 NM Holding Pattern |
| | | JISTA | |
| | CAXAM 1.9 NM to UGUYE | UGUYE | ORTIN |
| | ≤ 4.00° TCH 53 | 333° | 213° → 6000 |
| | 1140 | 2100 | ← 033° 3000 |
| | 1.9 NM | 2.3 NM | 7.4 NM |
| CATEGORY | A | B | C |
| CIRCLING | 920-1¼ 857 (900-1¼) | 1040-1½ 977 (1000-1½) | NA |

NW-1, 14 MAY 2026 to 11 JUN 2026

NW-1, 14 MAY 2026 to 11 JUN 2026