

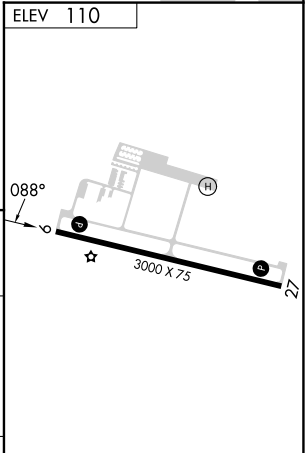
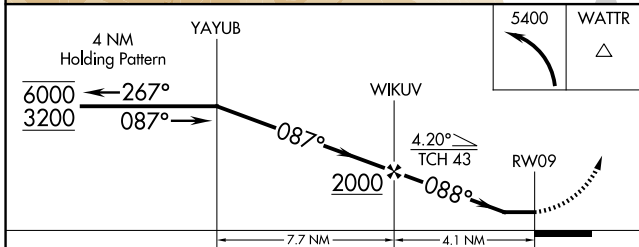
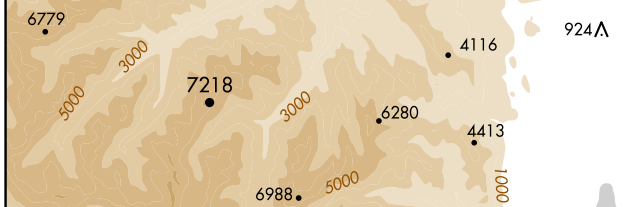
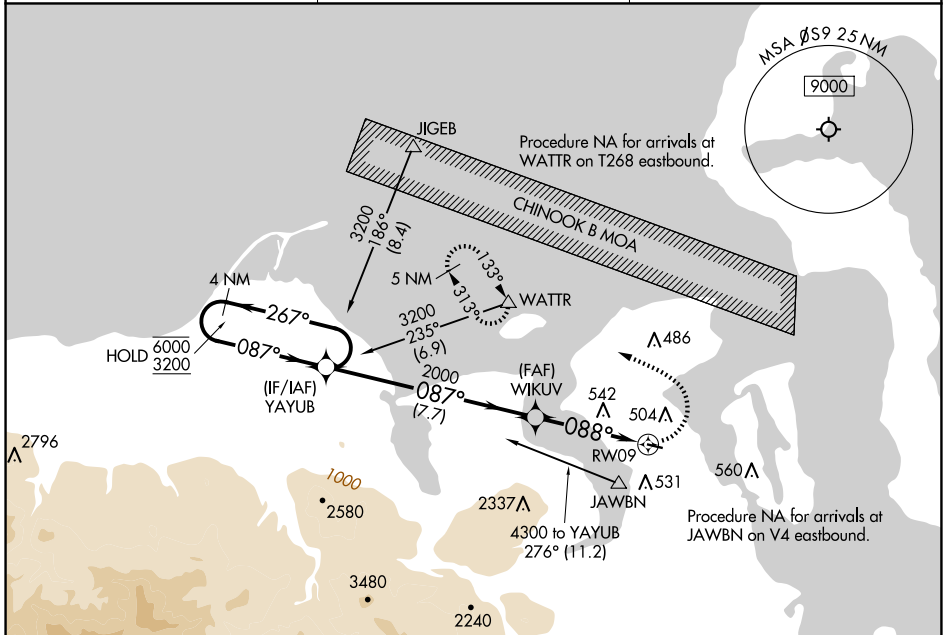
APP CRS	Rwy Ldg	N/A
088°	TDZE	N/A
	Apt Elev	110

# RNAV (GPS)-A

JEFFERSON COUNTY INTL (ØS9)

RNP APCH - GPS.	MISSED APPROACH: Climbing left turn to 5400 direct WATTR and hold, continue climb-in-hold to 5400.
<p>▼ Procedure NA at night. Rwy 9, 27 helicopter visibility reduction below 1 SM NA.</p> <p>▲</p>	

AWOS-3P <b>119.025</b>	WHIDBEY APP CON <b>118.2</b>	UNICOM <b>123.0 (CTAF) 0</b>
---------------------------	---------------------------------	---------------------------------



CATEGORY	A	B	C	D
CIRCLING	960-1¼ 850 (900-1¼)	980-1¼ 870 (900-1¼)	NA	

REIL Rwy 9 0  
MRL Rwy 9-27 0

NW-1, 14 MAY 2026 to 11 JUN 2026

NW-1, 14 MAY 2026 to 11 JUN 2026