

APP CRS <b>017°</b>	Rwy Idg TDZE Apt Elev	<b>4500</b> <b>2087</b> <b>2092</b>
------------------------	-----------------------------	---

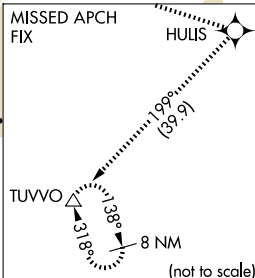
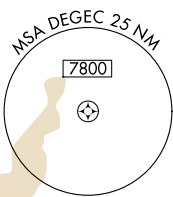
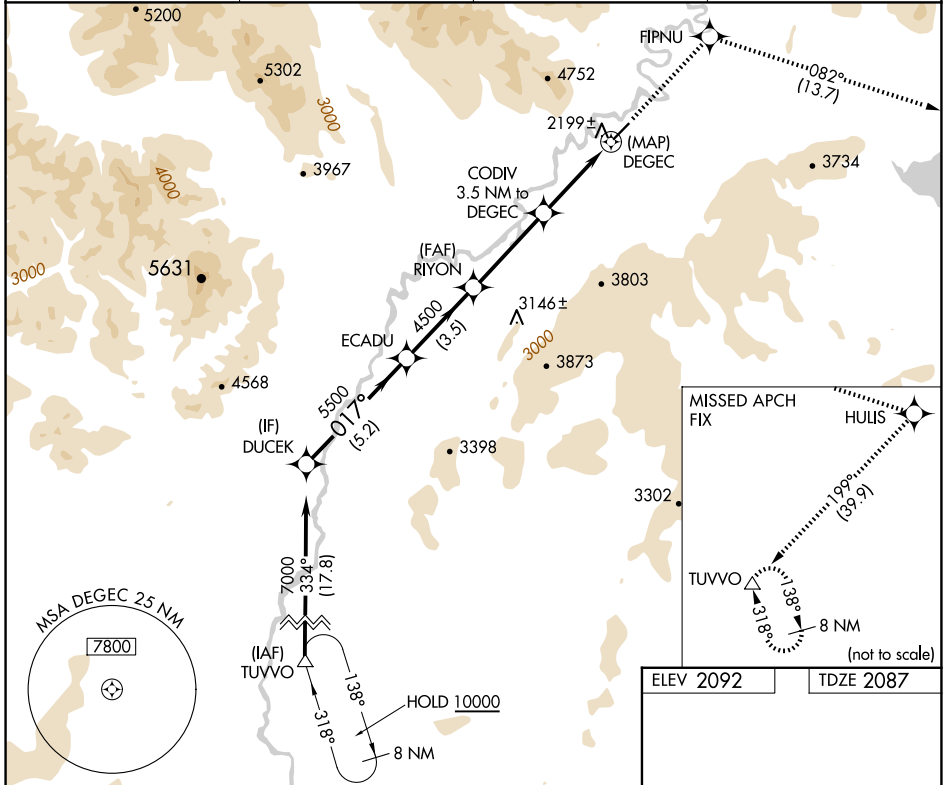
# RNAV (GPS) RWY 2

ARCTIC VILLAGE (ARC)(PARC)

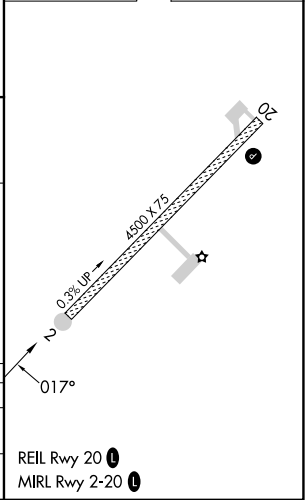
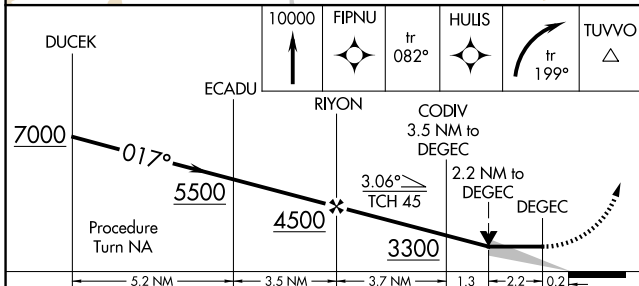
**33** -37°C  
DME/DME RNP-0.3 NA.  
If local altimeter setting not received, procedure NA.

MISSED APPROACH: Climb to 10000 direct FIPNU and via 082° track to HULIS and right turn via 199° track to TUVVO and hold.

AWOS-3P <b>135.75</b>	ANCHORAGE CENTER <b>135.0 225.4</b>	FAIRBANKS RADIO <b>122.05</b>	CTAF <b>122.9 0</b>
--------------------------	--	----------------------------------	------------------------



ELEV 2092	TDZE 2087
-----------	-----------



CATEGORY	A	B	C	D
LNVA MDA	2880-1 793 (800-1)	2880-1¼ 793 (800-1¼)		NA
CIRCLING	2880-1 788 (800-1)	2900-1¼ 808 (900-1¼)		NA

AK, 14 MAY 2026 to 09 JUL 2026

AK, 14 MAY 2026 to 09 JUL 2026