

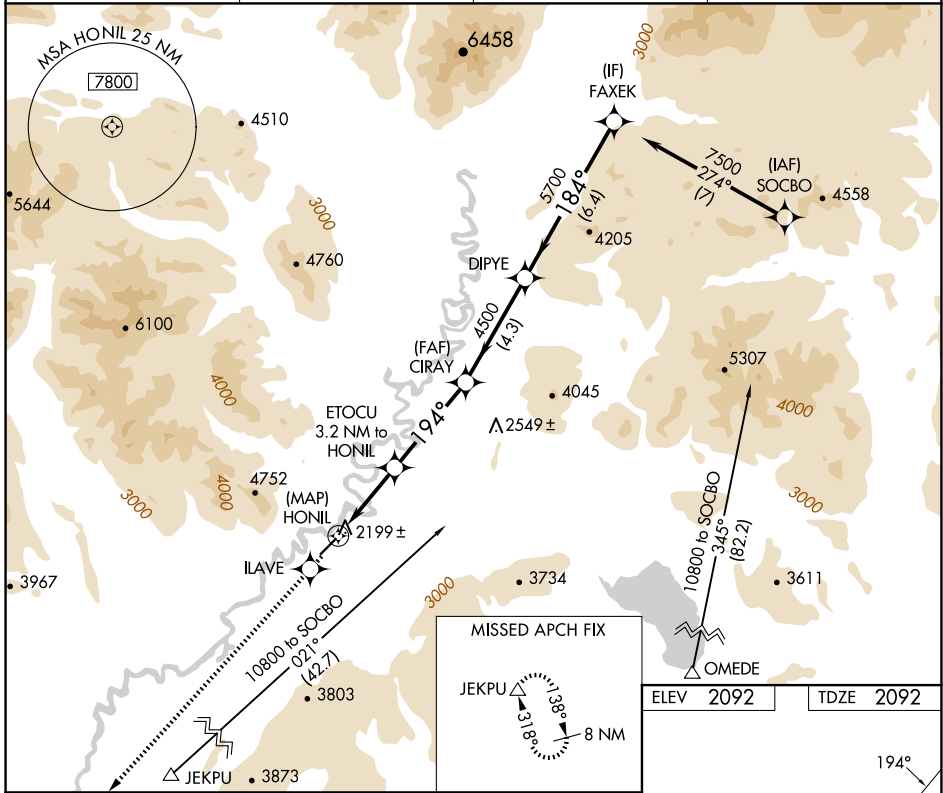
APP CRS <b>194°</b>	Rwy Idg <b>4500</b>
	TDZE <b>2092</b>
	Apt Elev <b>2092</b>

# RNAV (GPS) RWY 20

ARCTIC VILLAGE (ARC)(PARC)

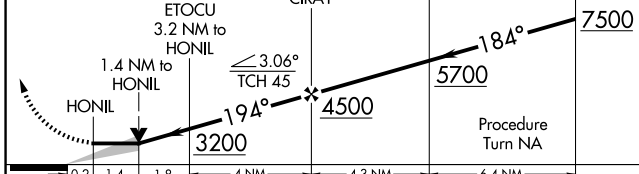
-37°C	DME/DME RNP-0.3 NA. If local altimeter setting not received, procedure NA.	MISSED APPROACH: Climb to 10000 direct ILAVE and via 196° track to JEKPU and hold, continue climb-in-hold to 10000.
-------	---	---

AWOS-3P <b>135.75</b>	ANCHORAGE CENTER <b>135.0 225.4</b>	FAIRBANKS RADIO <b>122.05</b>	CTAF <b>122.9</b>
--------------------------	--	----------------------------------	----------------------



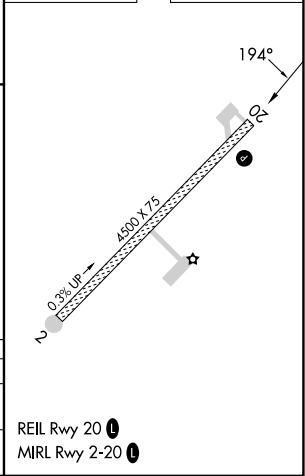
10000	ILAVE	tr	JEKPU	FAXEK
↑		196°		

VGSI and descent angles not coincident  
(VGSI Angle 3.00/TCH 27).



CATEGORY	A	B	C	D
LNVA MDA	2600-1	508 (600-1)		NA
CIRCLING	2700-1 608 (700-1)	2900-1 808 (900-1)		NA

ELEV 2092	TDZE 2092
-----------	-----------



AK, 14 MAY 2026 to 09 JUL 2026

AK, 14 MAY 2026 to 09 JUL 2026