

WAAS CH 63143 W25A	APP CRS 253°	Rwy Ldg 4000 TDZE 175 Apt Elev 179
--	------------------------	---

RNAV (GPS) RWY 25

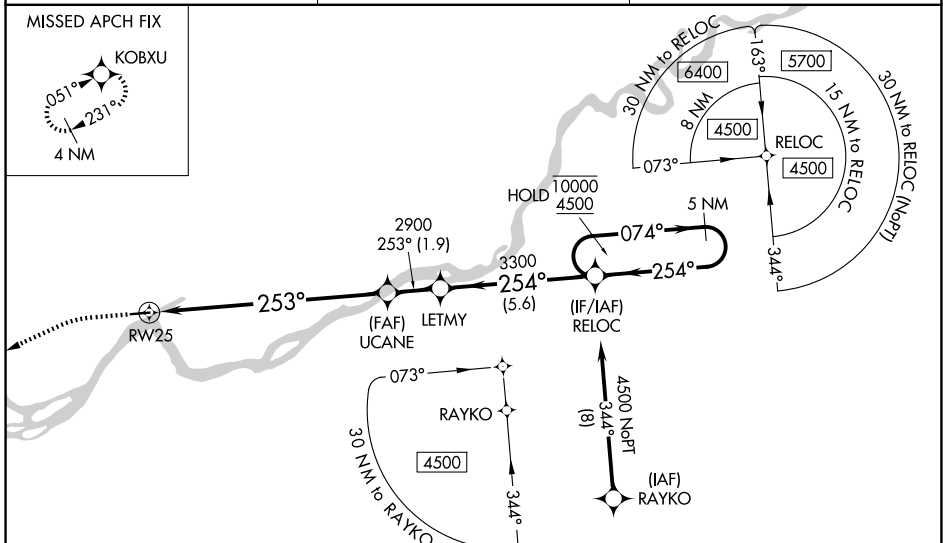
BOB BAKER MEML (IAN) (PAIK)

RNP APCH - GPS.

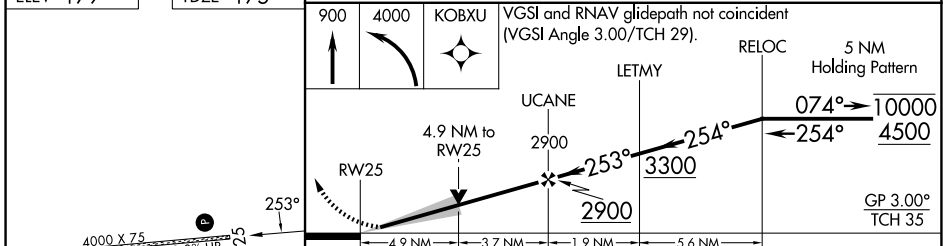
⚠ Circling NA north of Rwy 7-25. Circling Rwy 7 NA at night. For uncompensated Baro-VNAV systems, LNAV/VNAV NA below -25°C or above 54°C. Baro-VNAV and VDP NA when using WLK/PASK altimeter setting. When local altimeter setting not received, use WLK/PASK altimeter setting and increase LPV DA* to 531 feet; increase LPV DA to 720 feet and all visibilities ¼ SM. Increase LNAV/VNAV DA to 888 feet and all visibilities ¼ SM. Increase all MDAs 100 feet.

MISSED APPROACH: Climb to 900 then climbing left turn to 4000 direct KOBXU and hold, continue climb-in-hold to 4000. *Missed approach requires minimum climb of 335 feet per NM to 1440.

AWOS-3P 119.025	ANCHORAGE CENTER 119.2 263.0	CTAF 122.7
---------------------------	--	----------------------



ELEV 179	TDZE 175
----------	----------



CATEGORY	A	B	C	D
LPV DA*	450-1 275 (300-1)			
LPV DA	639-1¾ 464 (500-1¾)			
LNAV/VNAV DA	807-1¾ 632 (700-1¾)			
LNAV MDA	1740-1¼ 1565 (1600-1¼)	1740-1½ 1565 (1600-1½)	1740-3	1565 (1600-3)
CIRCLING	1740-1¼ 1561 (1600-1¼)	1740-1½ 1561 (1600-1½)	1740-3	1561 (1600-3)

MIRL Rwy 7-25 **Ⓛ**
REIL Rwy 25 **Ⓛ**

KIANA, ALASKA
Amdt 2 27NOV25

66°59'N-160°26'W

BOB BAKER MEML (IAN) (PAIK)

RNAV (GPS) RWY 25

AK, 14 MAY 2026 to 09 JUL 2026

AK, 14 MAY 2026 to 09 JUL 2026