

APP CRS	Rwy Idg	<b>5003</b>
<b>011°</b>	TDZE	<b>62</b>
	Apt Elev	<b>62</b>

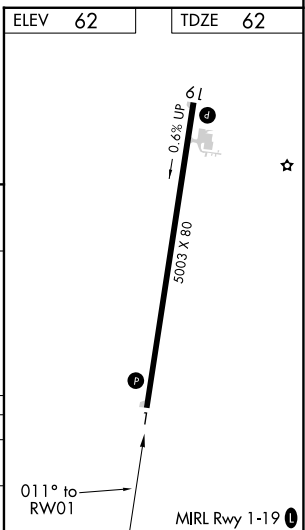
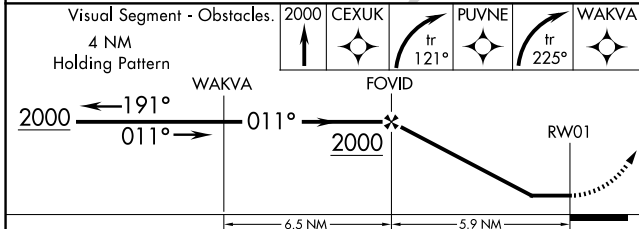
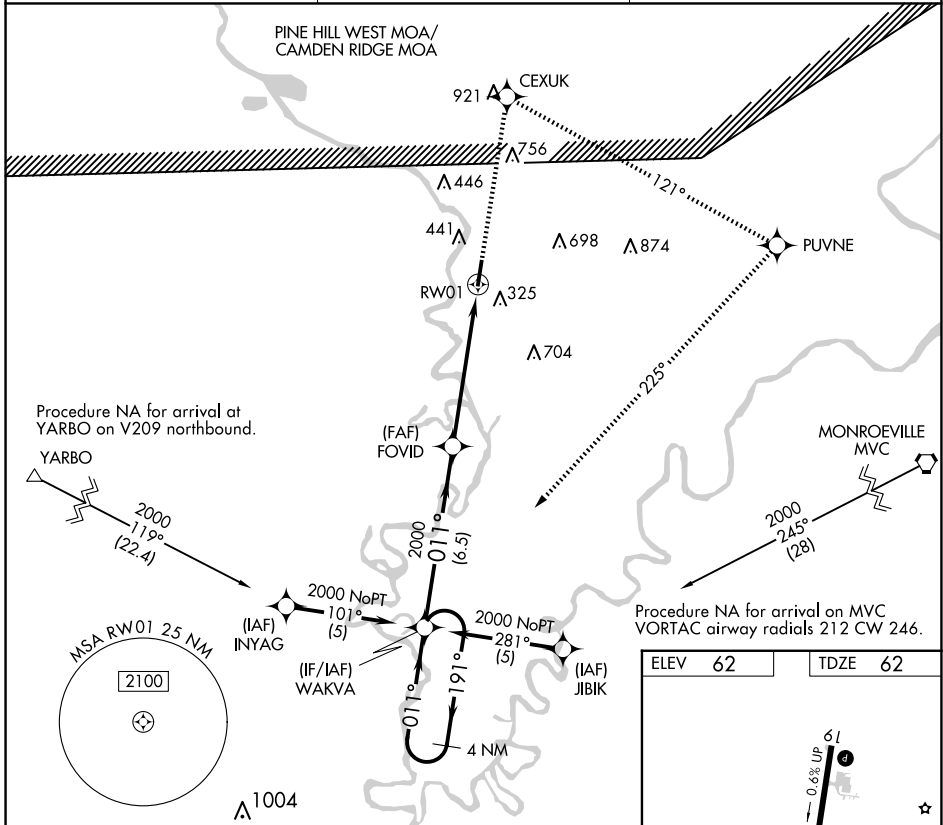
# RNAV (GPS) RWY 1

JACKSON MUNI (4R3)

RNP APCH. Procedure NA at night. Rwy 1 helicopter visibility reduction below 1 SM NA. Use Evergreen altimeter setting, when not received, use Mobile Rgnl altimeter setting and increase all MDA 20 feet.

MISSED APPROACH: Climb to 2000 direct CEXUK and right turn on track 121° to PUVNE and right turn on track 225° to WAKVA and hold.

GZH ASOS	HOUSTON CENTER	CTAF
<b>133.425</b>	<b>127.65 285.475</b>	<b>122.90</b>



CATEGORY	A	B	C	D
LNVA MDA	900-1 838 (900-1)	900-1 1/4 838 (900-1 1/4)	900-2 1/2 838 (900-2 1/2)	900-2 3/4 838 (900-2 3/4)
CIRCLING	980-1 1/4	918 (1000-1 1/4)	980-2 3/4 918 (1000-2 3/4)	1140-3 1078 (1100-3)

SE-4, 14 MAY 2026 to 11 JUN 2026

SE-4, 14 MAY 2026 to 11 JUN 2026