

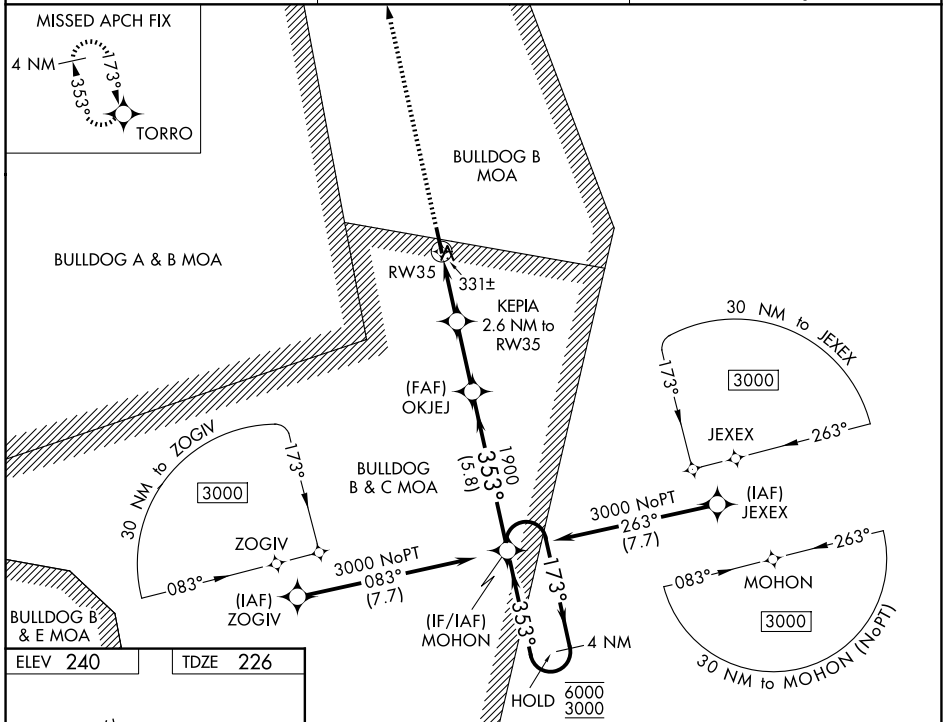
WAAS CH <b>53718</b> <b>W35A</b>	APP CRS <b>353°</b>	Rwy Ldg TDZE Apt Elev	<b>5001</b> <b>226</b> <b>240</b>
--	------------------------	-----------------------------	---

# RNAV (GPS) RWY 35

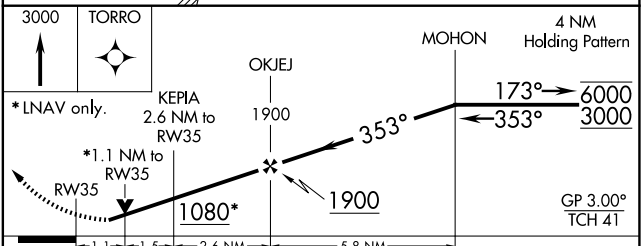
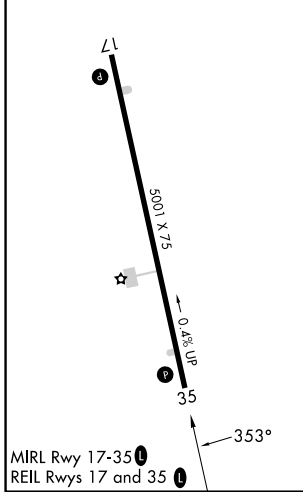
MILLEN (2J5)

RNP APCH.	<p>▼ Circling NA east of Rwy 17-35. For uncompensated Baro-VNAV systems, LNAV/VNAV NA below -15°C or above 54°C. Rwy 35 helicopter visibility reduction below ¾ SM NA. Circling Rwy 17 NA at night.</p> <p>▲ MISSED APPROACH: Climb to 3000 direct TORRO and hold.</p>
-----------	--

AWOS-3PT <b>120.2</b>	AUGUSTA APP CON * <b>126.8 270.3</b>	CTAF <b>122.90</b>
--------------------------	---	-----------------------



ELEV 240	TDZE 226
----------	----------



CATEGORY	A	B	C	D
LPV DA		476-1	250 (300-1)	
LNAV/VNAV DA		633-1½	407 (400-1½)	
LNAV MDA		600-1	374 (400-1)	
CIRCLING	680-1	700-1	700-1½	1040-2½
	440 (500-1)	460 (500-1)	460 (500-1½)	800 (800-2½)

SE-4, 14 MAY 2026 to 11 JUN 2026

SE-4, 14 MAY 2026 to 11 JUN 2026