

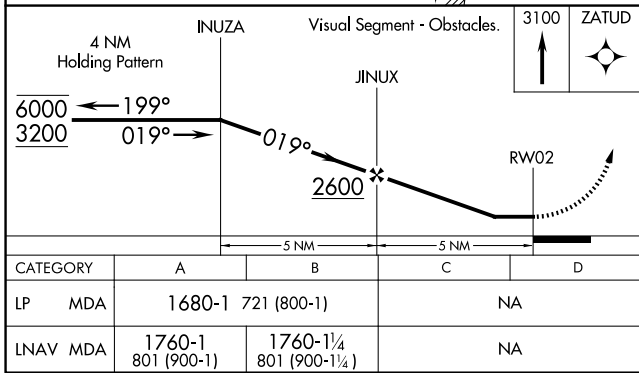
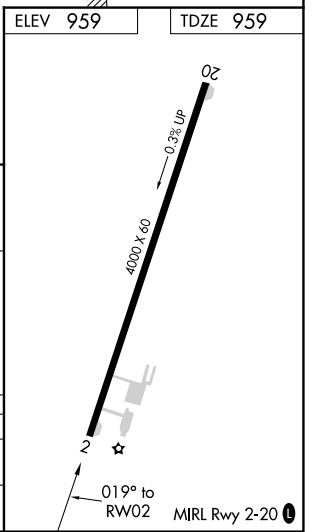
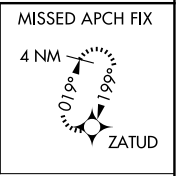
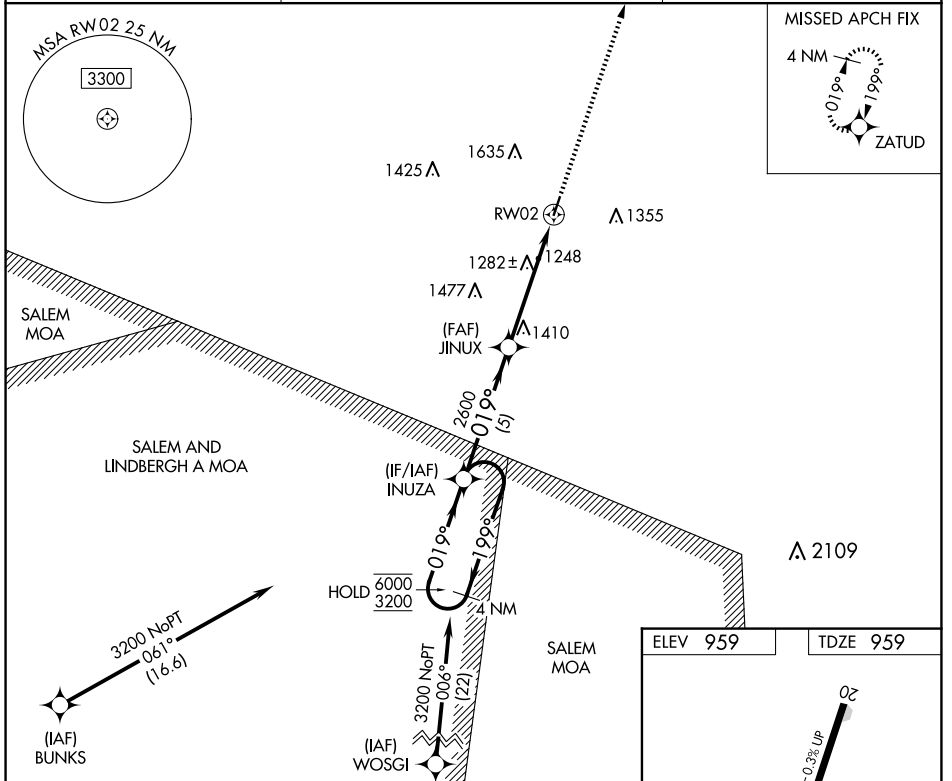
WAAS CH <b>93624</b> <b>W02A</b>	APP CRS <b>019°</b>	Rwy Idg TDZE Apt Elev	<b>4000</b> <b>959</b> <b>959</b>
--	------------------------	-----------------------------	---

# RNAV (GPS) RWY 2

WASHINGTON COUNTY (8WC)

RNP APCH-GPS.		MISSED APPROACH: Climb to 3100 direct ZATUD and hold.
NA Rwy 2 helicopter visibility reduction below 3/4 SM NA. Use Farmington altimeter setting.		

FAM AWOS-3PT <b>119.275</b>	KANSAS CITY CENTER <b>128.35 284.675</b>	UNICOM <b>123.0 (CTAF)</b>
--------------------------------	---	-------------------------------



NC-3, 14 MAY 2026 to 11 JUN 2026

NC-3, 14 MAY 2026 to 11 JUN 2026