

WAAS CH 45610 W16A	APP CRS 165°	Rwy Ldg TDZE 79 Apt Elev 79
--	------------------------	---

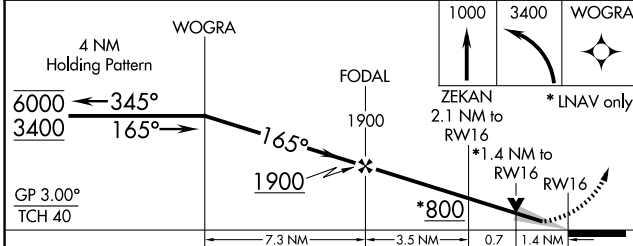
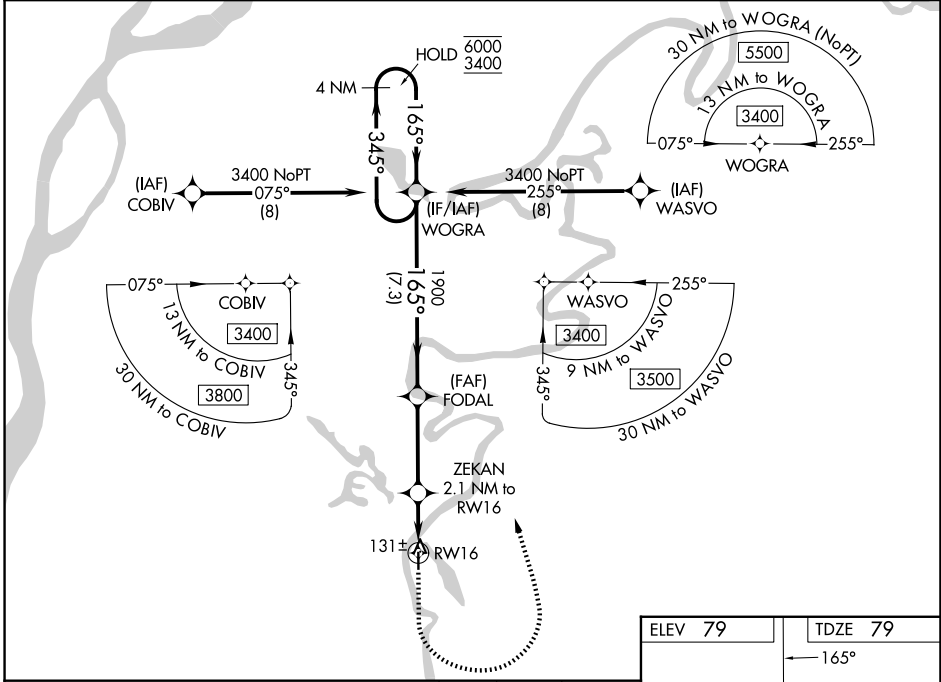
RNAV (GPS) RWY 16

SHAGELUK (SHX) (PAHX)

RNP APCH.
 ▼ For uncompensated Baro-VNAV systems, LNAV/VNAV NA below -25°C or above 54°C.
 ▲ Circling NA for Cats C and D east of Rwy 16-34.

MISSED APPROACH: Climb to 1000 then climbing left turn to 3400 direct WOGRA and hold.

AWOS-3P 121.575	ANCHORAGE CENTER 135.7 335.5	KENAI RADIO 122.4	UNICOM 122.8 (CTAF)
---------------------------	--	-----------------------------	-------------------------------



ELEV 79	TDZE 79
165°	
91	
3400 X 75	
34	
MIRL Rwy 16-34	
REIL Rwy 34	

CATEGORY	A	B	C	D
LPV DA		329-1	250 (300-1)	
LNAV/VNAV DA		329-1	250 (300-1)	
LNAV MDA		400-1	321 (400-1)	
CIRCLING	460-1 381 (400-1)	540-1 461 (500-1)	540-1½ 461 (500-1½)	800-2¼ 721 (800-2¼)

AK, 14 MAY 2026 to 09 JUL 2026

AK, 14 MAY 2026 to 09 JUL 2026