

|                        |                         |
|------------------------|-------------------------|
| APP CRS<br><b>228°</b> | Rwy Idg<br><b>4300</b>  |
|                        | TDZE<br><b>2864</b>     |
|                        | Apt Elev<br><b>2869</b> |

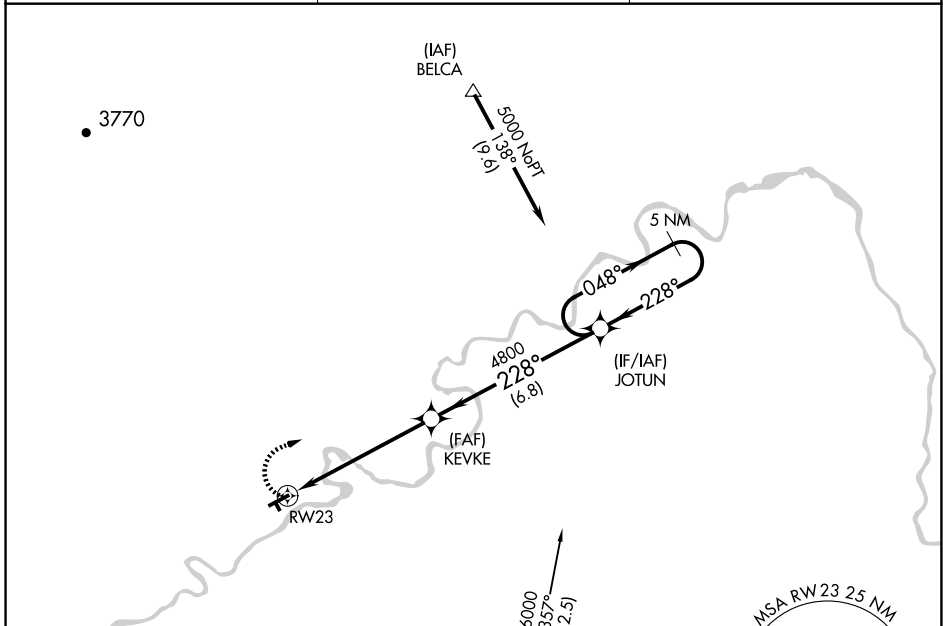
# RNAV (GPS) RWY 23

FORT BENTON (79S)

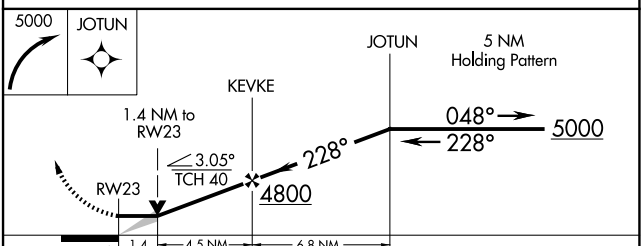
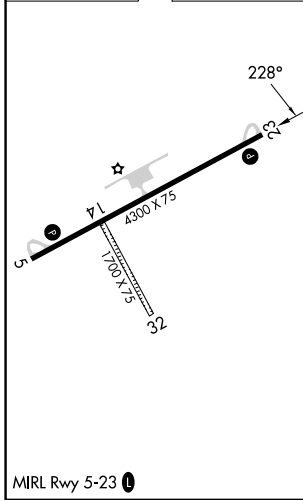
**⚠** DME/DME RNP-0.3 NA. Procedure NA at night. When local altimeter setting not received, use Great Falls altimeter setting and increase all MDAs 200 feet and LNAV visibility Cat C ½ SM, and Circling visibility Cat C ¾ SM. Circling NA to Rwy 14-32.

**MISSED APPROACH:** Climbing right turn to 5000 direct JOTUN and hold.

|                            |  |  |
|----------------------------|--|--|
| AWOS-3PT<br><b>121.125</b> | SALT LAKE CENTER<br><b>133.4 285.4</b> | UNICOM<br><b>122.8 (CTAF)</b> <b>📻</b> |
|----------------------------|--|--|



|           |           |
|-----------|-----------|
| ELEV 2869 | TDZE 2864 |
|-----------|-----------|



| CATEGORY | A      | B           | C                       | D  |
|----------|--------|-------------|-------------------------|----|
| LNAV MDA | 3340-1 | 476 (500-1) | 3340-1¼<br>476 (500-1¼) | NA |
| CIRCLING | 3340-1 | 471 (500-1) | 3460-1½<br>591 (600-1½) | NA |

NW-1, 14 MAY 2026 to 11 JUN 2026

NW-1, 14 MAY 2026 to 11 JUN 2026