

(FOLZZ3.FOLZZ) 24081
FOLZZ THREE DEPARTURE(RNAV)

AL- 10263 (FAA)
MIAMI HOMESTEAD GENERAL AVIATION (X51)
 HOMESTEAD, FLORIDA

MIAMI DEP CON
 125.5 354.1
 AWOS-3
 118.375
 CTAF
 122.8

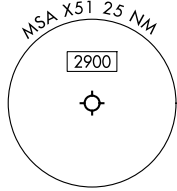
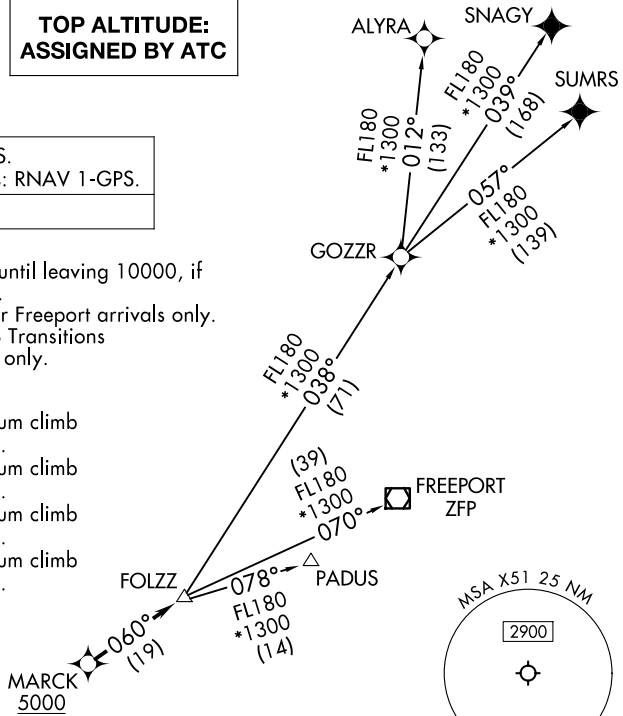
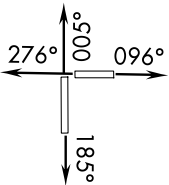
**TOP ALTITUDE:
 ASSIGNED BY ATC**

RNAV-1 DME/DME/IRU or GPS.
 SNAGY and SUMRS Transitions: RNAV 1-GPS.
 RADAR required.

NOTE: Jet aircraft only.
 NOTE: Accelerate to 250K until leaving 10000, if unable, advise ATC.
 NOTE: PADUS Transition for Freeport arrivals only.
 NOTE: SNAGY and SUMRS Transitions for European traffic only.

TAKEOFF MINIMUMS

- Rwy 10: Standard with minimum climb of 500'/NM to 2400.
- Rwy 18: Standard with minimum climb of 500'/NM to 1800.
- Rwy 28: Standard with minimum climb of 500'/NM to 1900.
- Rwy 36: Standard with minimum climb of 500'/NM to 2200.



NOTE: Chart not to scale.

DEPARTURE ROUTE DESCRIPTION

TAKEOFF RUNWAY 10: Climb on heading 096° or as assigned by ATC for RADAR vectors to cross MARCK at or above 5000, thence. . .
TAKEOFF RUNWAY 18: Climb on heading 185° or as assigned by ATC for RADAR vectors to cross MARCK at or above 5000, thence. . .
TAKEOFF RUNWAY 28: Climb on heading 276° or as assigned by ATC for RADAR vectors to cross MARCK at or above 5000, thence. . .
TAKEOFF RUNWAY 36: Climb on heading 005° or as assigned by ATC for RADAR vectors to cross MARCK at or above 5000, thence. . .

. . .on track 060° to FOLZZ, then on assigned transition. Maintain ATC assigned altitude, expect filed altitude within 10 minutes after departure.

- ALYRA TRANSITION (FOLZZ3.ALYRA)
- FREEPORT TRANSITION (FOLZZ3.ZFP)
- GOZZR TRANSITION (FOLZZ3.GOZZR)
- PADUS TRANSITION (FOLZZ3.PADUS)
- SNAGY TRANSITION (FOLZZ3.SNAGY)
- SUMRS TRANSITION (FOLZZ3.SUMRS)

FOLZZ THREE DEPARTURE(RNAV) (FOLZZ3.FOLZZ) 21MAR24 HOMESTEAD, FLORIDA
 MIAMI HOMESTEAD GENERAL AVIATION (X51)

SE-3, 14 MAY 2026 to 11 JUN 2026

SE-3, 14 MAY 2026 to 11 JUN 2026