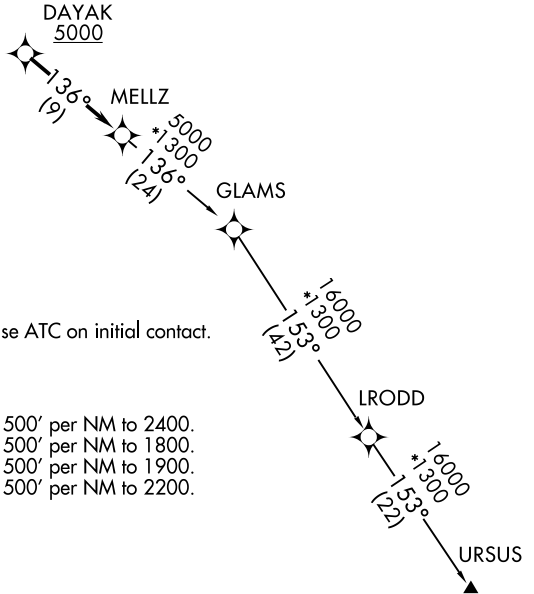
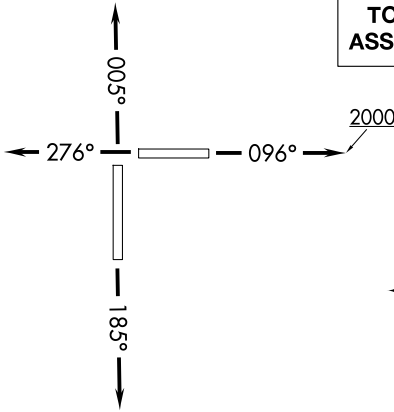


MELLZ TWO DEPARTURE (RNAV)

MIAMI HOMESTEAD GENERAL AVIATION (X51)
HOMESTEAD, FLORIDA

**TOP ALTITUDE:
ASSIGNED BY ATC**

- AWOS-3
- 118.375
- KHST ATIS*
- 132.275 269.9
- TMB ATIS
- 124.0
- CTAF
- 122.8
- MIAMI DEP CON
- 125.5 354.1



NOTE: If unable to accept climb rate, advise ATC on initial contact.

TAKEOFF MINIMUMS

- Rwy 10: Standard with minimum climb of 500' per NM to 2400.
- Rwy 18: Standard with minimum climb of 500' per NM to 1800.
- Rwy 28: Standard with minimum climb of 500' per NM to 1900.
- Rwy 36: Standard with minimum climb of 500' per NM to 2200.

RNAV 1-DME/DME/IRU or GPS.

RADAR required for non-GPS equipped aircraft.

NOTE: Chart not to scale.

DEPARTURE ROUTE DESCRIPTION

TAKEOFF RUNWAY 10: Climb on heading 096° to 2000 then as assigned by ATC for RADAR vectors to cross DAYAK at or above 5000 thence. . . .

TAKEOFF RUNWAY 18: Climb on heading 185° or as assigned by ATC for RADAR vectors to cross DAYAK at or above 5000 thence. . . .

TAKEOFF RUNWAY 28: Climb on heading 276° or as assigned by ATC for RADAR vectors to cross DAYAK at or above 5000 thence. . . .

TAKEOFF RUNWAY 36: Climb on heading 005° or as assigned by ATC for RADAR vectors to cross DAYAK at or above 5000 thence. . . .

. . . on track 136° to MELLZ, then on assigned transition. Maintain ATC assigned altitude, expect clearance to filed altitude within 10 minutes after departure.

GLAMS TRANSITION (MELLZ2.GLAMS)

URSUS TRANSITION (MELLZ2.URSUS)