

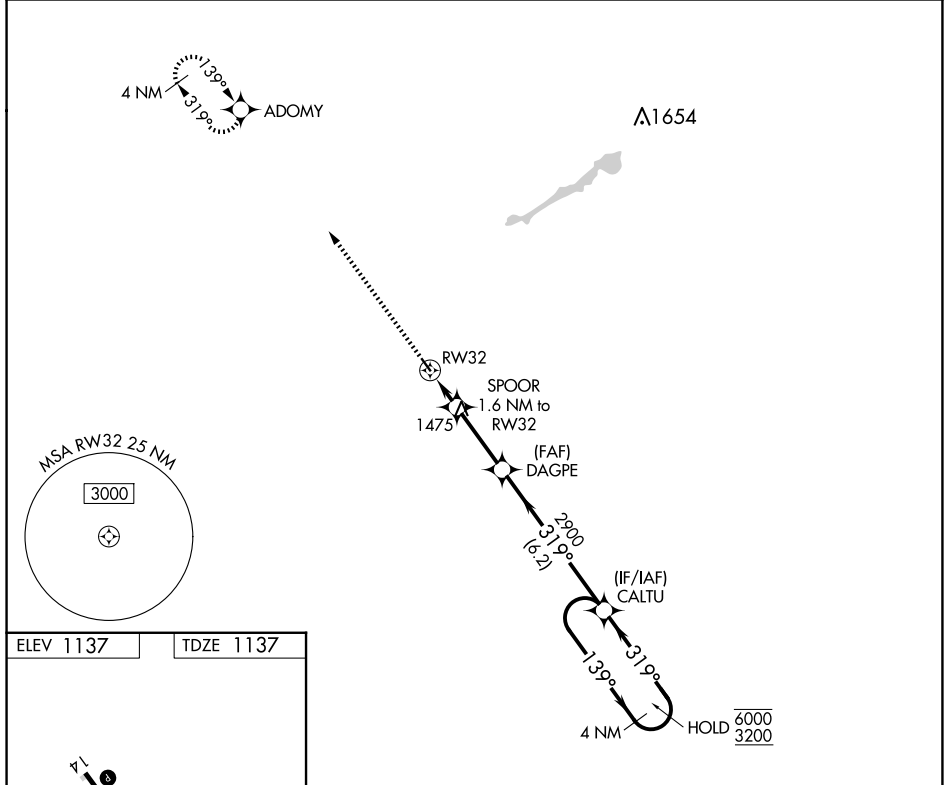
APP CRS	Rwy Idg	<b>3000</b>
<b>319°</b>	TDZE	<b>1137</b>
	Apt Elev	<b>1137</b>

# RNAV (GPS) RWY 32

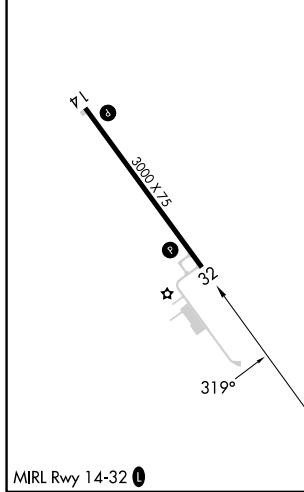
FERTILE MUNI (D14)

RNP APCH - GPS.		MISSED APPROACH: Climb to 3200 direct ADOMY and hold.
▼ ▲NA	Use Mahnomens altimeter setting.	

3N8 AWOS-3PT <b>121.125</b>	GRAND FORKS APP CON ★ <b>118.1 318.1</b>	UNICOM <b>122.8 (CTAF) 0</b>
--------------------------------	---	---------------------------------



ELEV 1137	TDZE 1137
-----------	-----------



3200	ADOMY	VGSI and descent angles not coincident (VGSI Angle 3.70/TCH 31).		CALTU
↑	✧			4 NM Holding Pattern
		SPOOR 1.6 NM to RW32	DAGPE	6000 3200
		RW32	2900	139° →
		1820	319°	← 319°
		1.6 NM	2.8 NM	6.2 NM
CATEGORY	A	B	C	D
LNAV MDA	1700-1	563 (600-1)	NA	
CIRCLING	1700-1	1760-1	NA	
	563 (600-1)	623 (700-1)		

NC-1, 14 MAY 2026 to 11 JUN 2026

NC-1, 14 MAY 2026 to 11 JUN 2026