

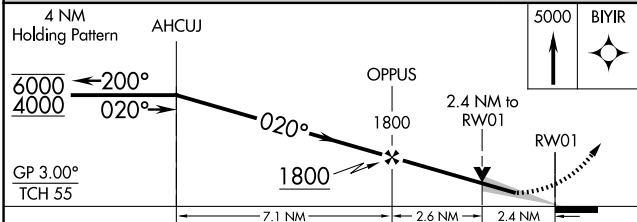
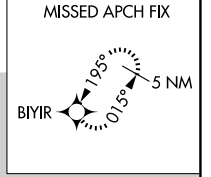
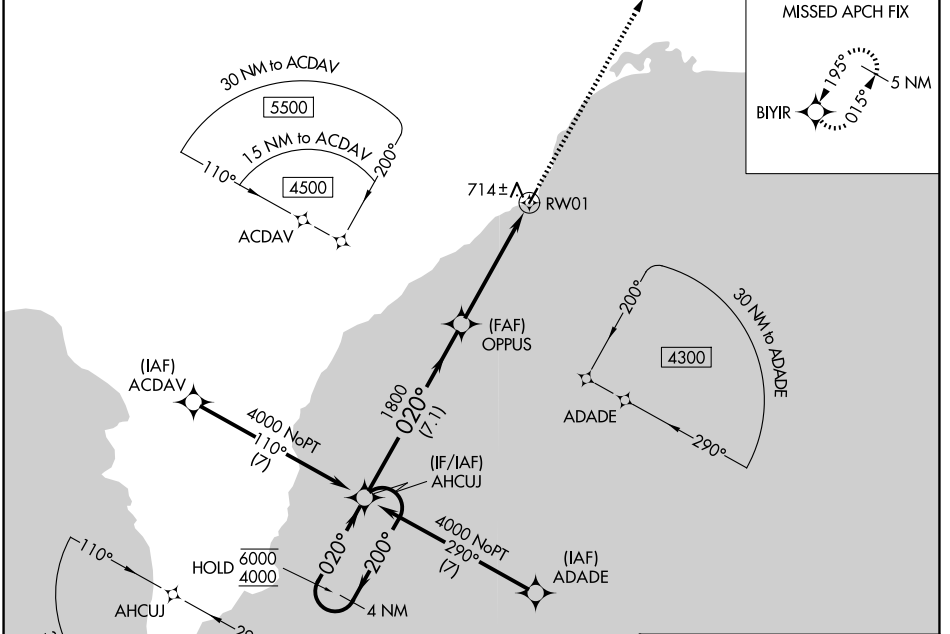
WAAS CH 58014 W01A	APP CRS 020°	Rwy Ldg 3401
	TDZE 162	Apt Elev 162

RNAV (GPS) RWY 1

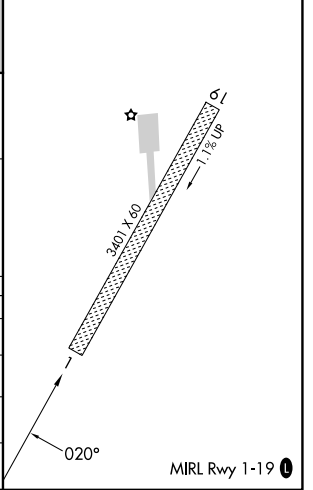
ELIM (ELI) (PFEL)

RNP APCH-GPS.		MISSED APPROACH: Climb to 5000 direct BIYIR and hold, continue climb-in hold to 5000.	
<p>Circling to Rwy 19 NA at night. For uncompensated Baro-VNAV systems, LNAV/VNAV NA below -18°C or above 54°C.</p> <p>-34°C</p>			

AWOS-3P 121.425	ANCHORAGE CENTER 133.3 290.4	NOME RADIO 122.15	CTAF 122.8
---------------------------	--	-----------------------------	----------------------



ELEV 162	TDZE 162
----------	----------



CATEGORY	A	B	C	D
LPV DA		668-1 $\frac{3}{8}$	506 (600-1 $\frac{3}{8}$)	
LNAV/VNAV DA		895-2	733 (800-2)	
LNAV MDA	980-1 818 (900-1)	980-1 $\frac{1}{4}$ 818 (900-1 $\frac{1}{4}$)	980-2 $\frac{1}{2}$	818 (900-2 $\frac{1}{2}$)
CIRCLING	980-1 $\frac{1}{4}$ 818 (900-1 $\frac{1}{4}$)	1040-1 $\frac{1}{4}$ 878 (900-1 $\frac{1}{4}$)	1040-2 $\frac{1}{2}$ 878 (900-2 $\frac{1}{2}$)	1040-2 $\frac{3}{4}$ 878 (900-2 $\frac{3}{4}$)

AK, 14 MAY 2026 to 09 JUL 2026

AK, 14 MAY 2026 to 09 JUL 2026