

WAAS CH <b>82028</b> <b>W27A</b>	APP CRS <b>272°</b>	Rwy Ldg TDZE Apt Elev	<b>6000</b> <b>7126</b> <b>7171</b>
--	------------------------	-----------------------------	---

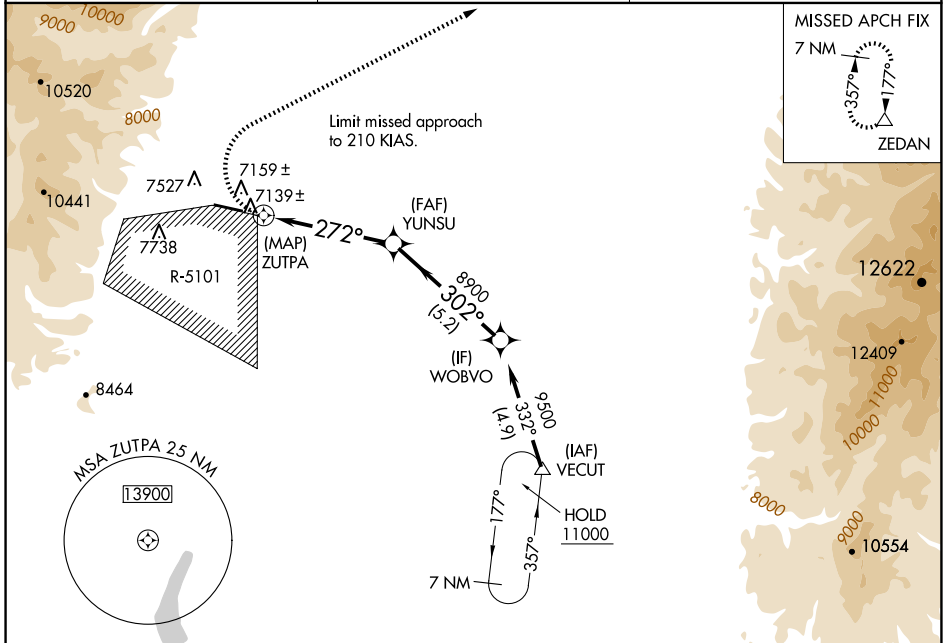
# RNAV (GPS) Y RWY 27

LOS ALAMOS (L.A.M)

**⚠** When local altimeter setting not received, procedure NA. \*LP and \*LNAV missed approach requires a minimum climb of 280 feet per NM to 8500. DME/DME RNP-0.3 NA. Visibility reduction by helicopters NA.

**MISSED APPROACH:**  
Climbing right turn to 11000 direct ZEDAN and hold.

AWOS-3 <b>124.175</b>	ALBUQUERQUE CENTER <b>132.8 346.35</b>	UNICOM <b>123.0 (CTAF) ①</b>
--------------------------	---	---------------------------------



SW-1, 14 MAY 2026 to 11 JUN 2026

SW-1, 14 MAY 2026 to 11 JUN 2026

ELEV 7171	TDZE 7126	11000	ZEDAN	
CATEGORY	A	B	C	D
LP MDA*	7580-1	454 (500-1)	7580-1 <sup>3</sup> / <sub>8</sub> 454 (500-1 <sup>3</sup> / <sub>8</sub> )	NA
LP MDA	7700-1	574 (600-1)	7700-1 <sup>7</sup> / <sub>8</sub> 574 (600-1 <sup>7</sup> / <sub>8</sub> )	NA
LNAV MDA*	7640-1	514 (500-1)	7640-1 <sup>5</sup> / <sub>8</sub> 514 (500-1 <sup>5</sup> / <sub>8</sub> )	NA
LNAV MDA	7880-1 754 (800-1)	7880-1 <sup>1</sup> / <sub>4</sub> 754 (800-1 <sup>1</sup> / <sub>4</sub> )	7880-2 <sup>1</sup> / <sub>2</sub> 754 (800-2 <sup>1</sup> / <sub>2</sub> )	NA
CIRCLING	NA			