

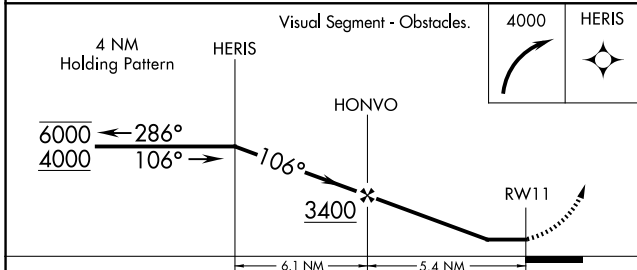
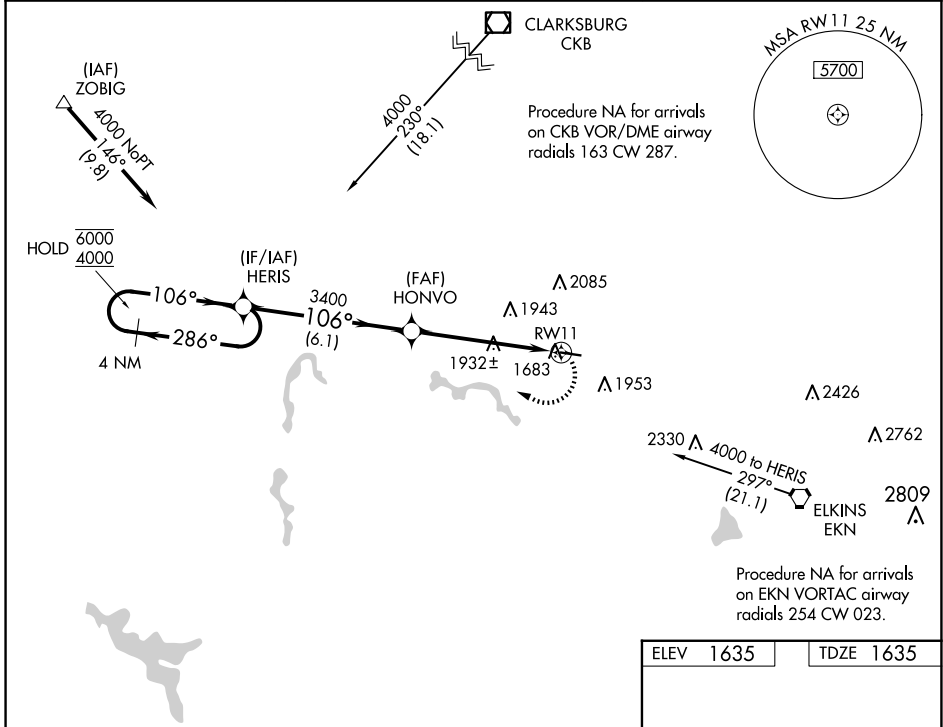
WAAS CH 72724 W11A	APP CRS 106°	Rwy Idg TDZE Apt Elev	4201 1635 1635
--	------------------------	-----------------------------	---

RNAV (GPS) RWY 11

UPSHUR COUNTY RGNL (W22)

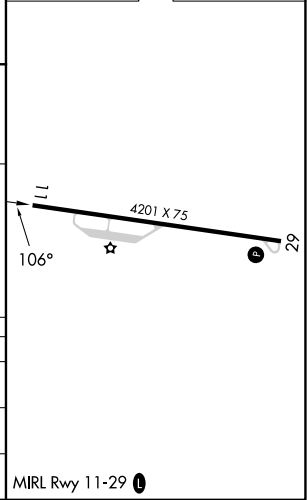
RNP APCH - GPS.	MISSED APPROACH: Climbing right turn to 4000 direct HERIS and hold.
Rwy 11 helicopter visibility reduction below 3/4 SM NA.	

AWOS-3 119.975	CLARKSBURG APP CON ★ 121.15 284.65	UNICOM 122.8 (CTAF) 0
--------------------------	--	---------------------------------



ELEV 1635	TDZE 1635
-----------	-----------

CATEGORY	A	B	C	D
LP MDA	2200-1	565 (600-1)	2200-1½ 565 (600-1½)	NA
RNAV MDA	2240-1	605 (700-1)	2240-1¾ 605 (700-1¾)	NA
CIRCLING	2240-1 605 (700-1)	2260-1 625 (700-1)	2400-2¼ 765 (800-2¼)	NA



NE-4, 14 MAY 2026 to 11 JUN 2026

NE-4, 14 MAY 2026 to 11 JUN 2026