

RNAV (GPS) RWY 4

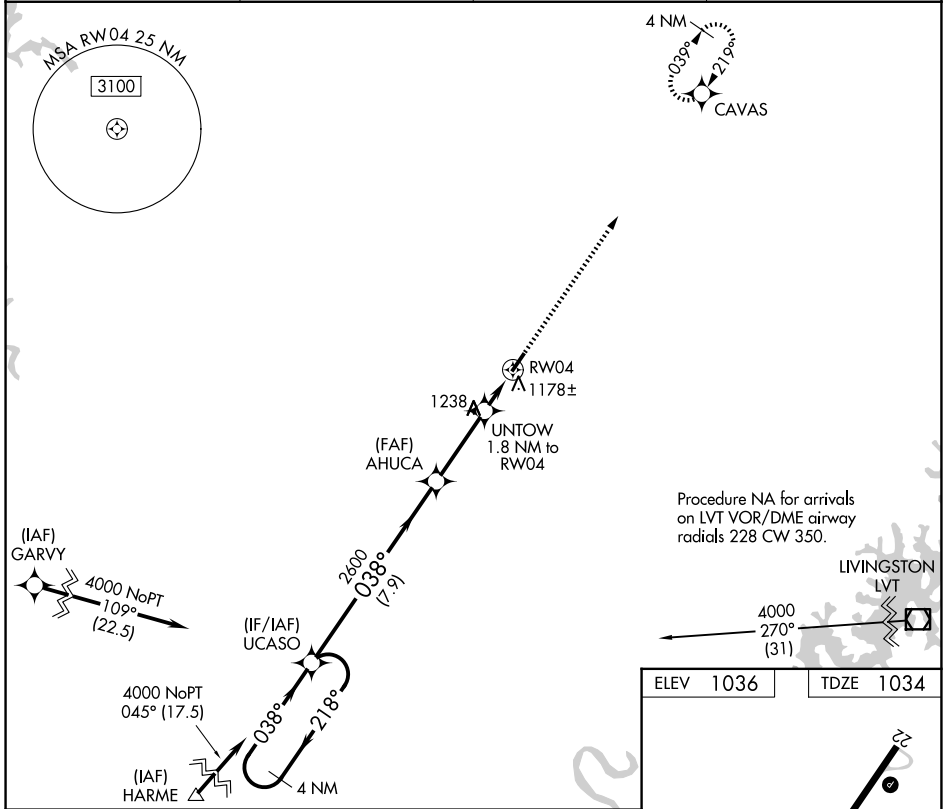
TOMPKINSVILLE/MONROE COUNTY (T'ZV)

APP CRS 038°	Rwy Ldg 4000
	TDZE 1034
	Apt Elev 1036

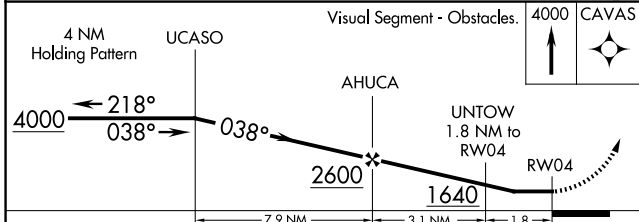
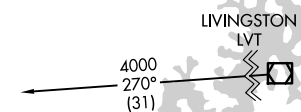
▼ DME/DME RNP-0.3 NA.
▲ NA Helicopter visibility reduction below 1 SM NA.
 Night landing: Rwy 4 NA.
 Use Glasgow altimeter setting.

MISSED APPROACH: Climb to 4000 direct CAVAS and hold.

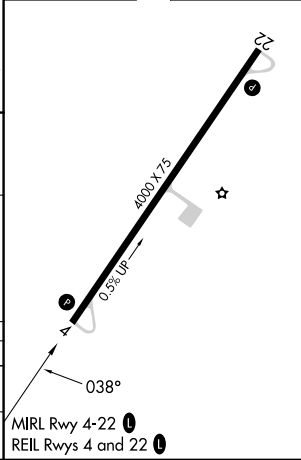
AWOS-AV 124.175	GLW AWOS-3 118.525	MEMPHIS CENTER 133.85 285.5	UNICOM 123.05 (CTAF) 0
---------------------------	------------------------------	---------------------------------------	----------------------------------



Procedure NA for arrivals on LVT VOR/DME airway radials 228 CW 350.



ELEV 1036	TDZE 1034
-----------	-----------



CATEGORY	A	B	C	D
LNNAV MDA	1540-1	506 (600-1)	1540-1 3/8 506 (600-1 3/8)	NA
CIRCLING	1640-1 604 (700-1)	1800-1 764 (800-1)	1840-2 1/4 804 (900-2 1/4)	NA

SE-1, 14 MAY 2026 to 11 JUN 2026

SE-1, 14 MAY 2026 to 11 JUN 2026