

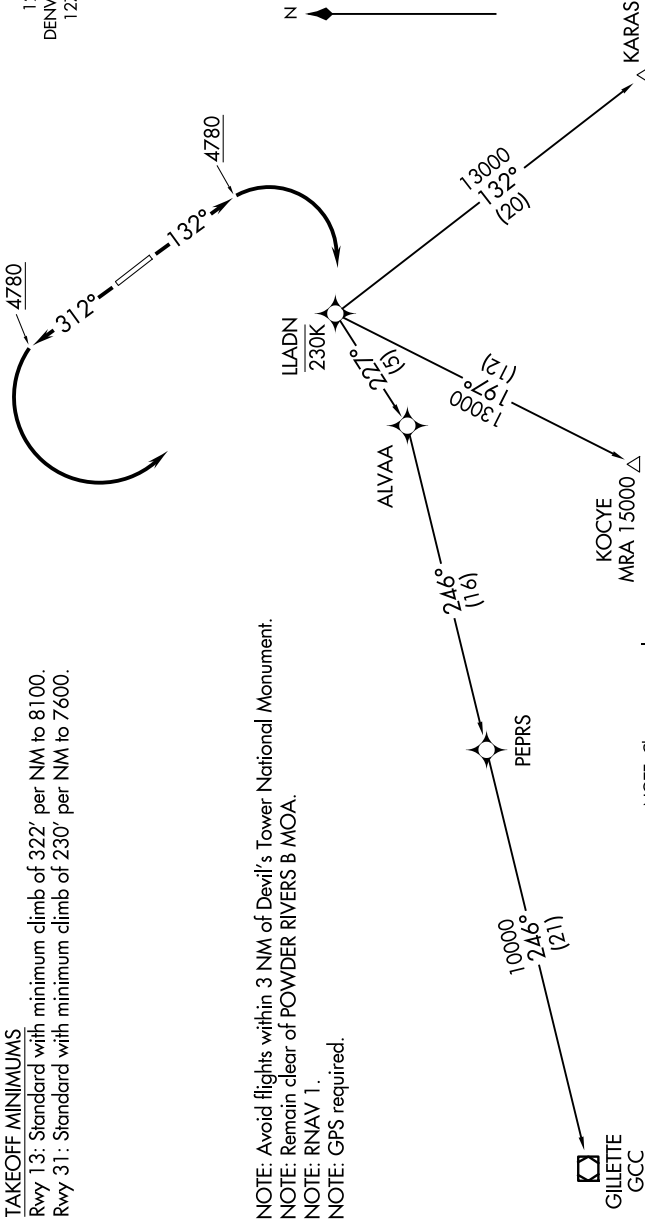
NW-1, 14 MAY 2026 to 11 JUN 2026

TAKEOFF MINIMUMS

Rwy 13: Standard with minimum climb of 322' per NM to 8100.
Rwy 31: Standard with minimum climb of 230' per NM to 7600.

UNICOM
122.8 (CTAF)
DENVER CENTER
127.95 338.2

NOTE: Avoid flights within 3 NM of Devil's Tower National Monument.
NOTE: Remain clear of POWDER RIVERS B MOA.
NOTE: RNAV 1.
NOTE: GPS required.



NOTE: Chart not to scale.

DEPARTURE ROUTE DESCRIPTION

TAKEOFF RUNWAY 13: Climb heading 132° to 4780, then right turn direct LLADN, cross LLADN at/below 230K. Thence
TAKEOFF RUNWAY 31: Climb heading 312° to 4780, then left turn direct LLADN, cross LLADN at/below 230K. Thence
. . . . Expect further clearance to filed altitude 10 minutes after departure.

LOST COMMUNICATIONS: Alternate frequency 135.6 / 363.025.

GILLETTE TRANSITION (LLADN1.GCC)

KARAS TRANSITION (LLADN1.KARAS)

KOCYE TRANSITION (LLADN1.KOCYE)



NW-1, 14 MAY 2026 to 11 JUN 2026