

APP CRS	Rwy Ldg TDZE	N/A
011°	Apt Elev	4264

RNAV (GPS)-A

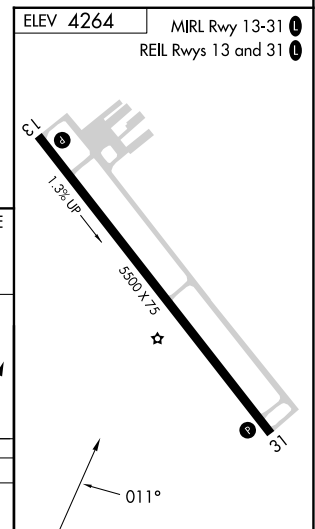
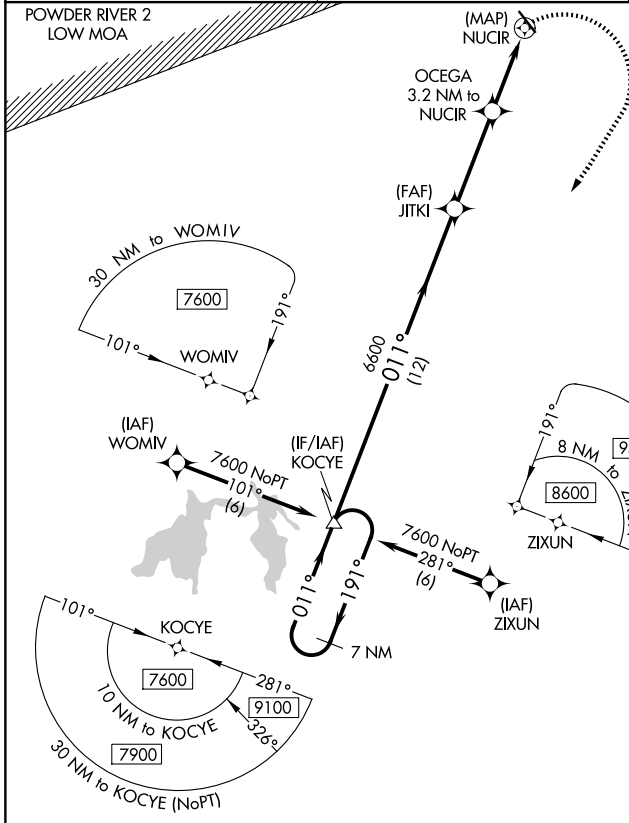
HULETT MUNI (W43)

RNP APCH - GPS.

▼ Procedure NA at night. When local altimeter setting is not received, use GCC altimeter setting and increase all MDA 120 feet and visibility Cat B ¼ SM.

MISSED APPROACH: Climbing right turn to 15000 direct KOCYE and hold, continue climb-in-hold to 15000.

AWOS-3PT 128.775	DENVER CENTER 127.95 338.2	UNICOM 122.8 (CTAF) 0
----------------------------	--------------------------------------	---------------------------------



7 NM Holding Pattern	KOCYE		15000 KOCYE
7600 ← 191°	→ 011°	011°	△
	JITKI	OCEGA 3.2 NM to NUCIR	NUCIR
	6600	5340	
	12 NM	3.7 NM	3.2 NM
CATEGORY	A	B	C D
CIRCLING	4900-1 636 (700-1)	5020-1 756 (800-1)	NA

NW-1, 14 MAY 2026 to 11 JUN 2026

NW-1, 14 MAY 2026 to 11 JUN 2026