

RNAV (GPS) RWY 20

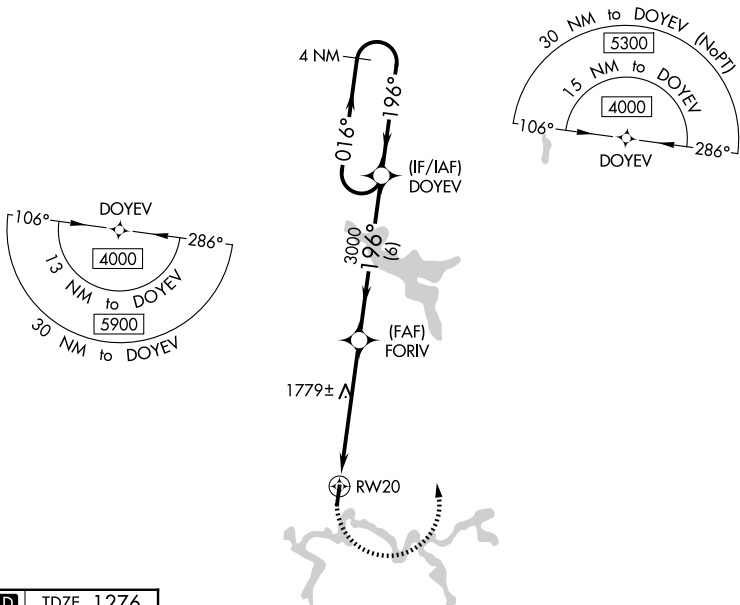
BRAXTON COUNTY (48I)

APP CRS 196°	Rwy Ldg TDZE Apt Elev	3815 1276 1276
------------------------	-----------------------------	---

NA DME/DME RNP-0.3 NA. Procedure NA at night. Helicopter visibility reduction below 1 SM NA. When local altimeter setting not received, use Clarksburg altimeter setting and increase all MDA 260 feet. Increase LNAV Cat A/B visibility ¼ mile, LNAV Cat C visibility ½ mile, and Circling Cat A visibility ¼ mile.

MISSED APPROACH: Climbing left turn to 4000 direct DOYEV and hold.

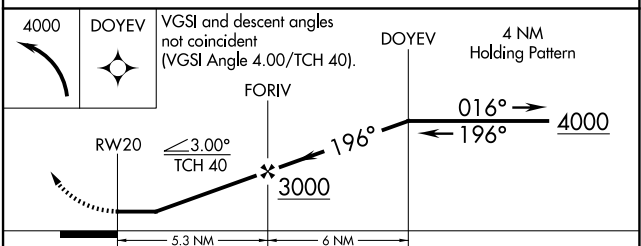
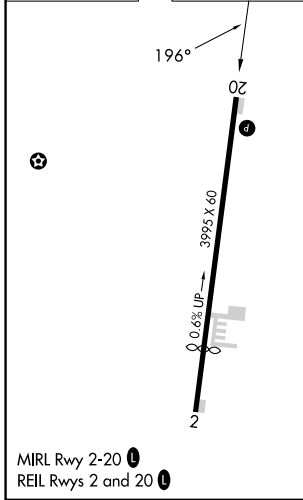
AWOS-3PT 118.225	CLARKSBURG APP CON ★ 121.15 284.65	CTAF 122.9 0
----------------------------	--	------------------------



NE-4, 14 MAY 2026 to 11 JUN 2026

NE-4, 14 MAY 2026 to 11 JUN 2026

ELEV 1276	D	TDZE 1276
-----------	----------	-----------



CATEGORY	A	B	C	D
LNAV MDA	2060-1 784 (800-1)	2060-1 ¼ 784 (800-1 ¼)	2060-2 ½ 784 (800-2 ½)	NA
CIRCLING	2060-1 784 (800-1)	2240-1 ½ 964 (1000-1 ½)	2240-3 964 (1000-3)	NA

RNAV (GPS) RWY 20