

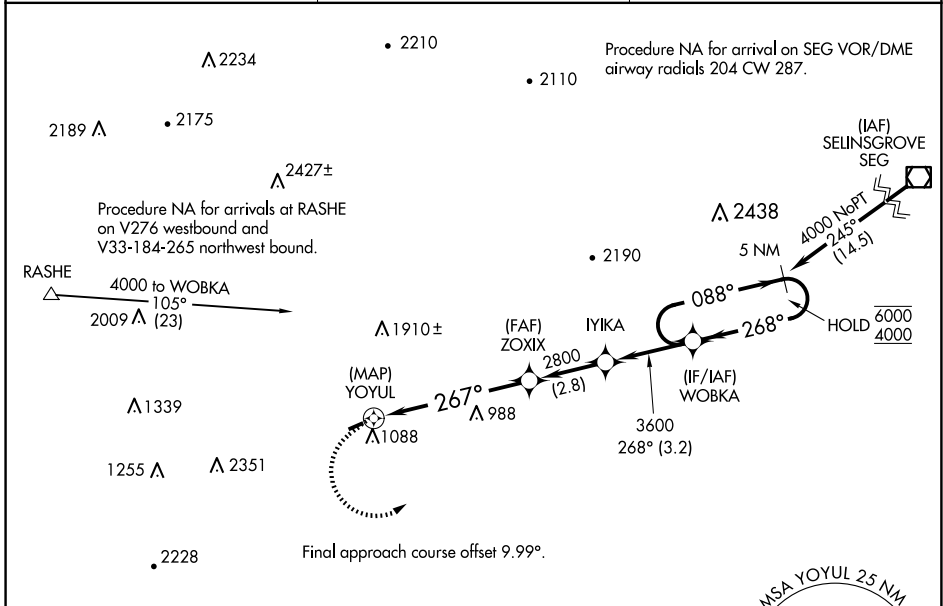
APP CRS 267°	Rwy Idg 2627
	TDZE 545
	Apt Elev 545

RNAV (GPS) RWY 26

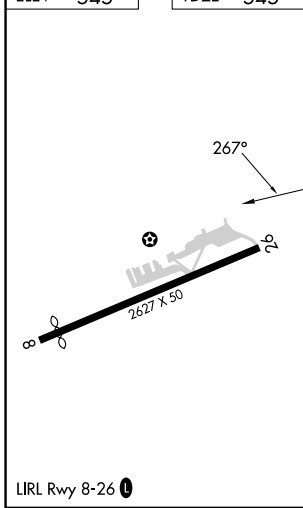
MIFFLINTOWN (P34)

RNP APCH - GPS.	<p>▼ Procedure NA at night. Rwy 26 helicopter visibility reduction below 1 SM NA.</p> <p>▲ NA Circling NA north of Rwy 8-26. Use Penn Valley altimeter setting; when not received, use Reedsville altimeter setting and increase all MDAs 240 feet and LNAV visibility Cat B ¼ SM.</p>	MISSED APPROACH: Climbing left turn to 4000 direct WOBKA and hold, continue climb-in-hold to 4000.
-----------------	--	--

SEG ASOS 123.975	NEW YORK APP CON 134.8 338.3	UNICOM 122.8 (CTAF)
----------------------------	--	-------------------------------



ELEV 545	TDZE 545
----------	----------



	4000	WOBKA	5 NM	WOBKA	5 NM	Holding Pattern
		(MAP) YOYUL	ZOXIX	IYIKA	WOBKA	
		267°	2800	3600	268°	088°
		3.38° TCH 35				6000
						4000
	0.5	5.7 NM	2.8 NM	3.2 NM		
CATEGORY	A	B	C	D		
LNAV MDA	1440-1¼	895 (900-1¼)			NA	
CIRCLING	1560-1¼	2080-1½			NA	
	1015 (1100-1¼)	1535 (1600-1½)				

NE-4, 14 MAY 2026 to 11 JUN 2026

NE-4, 14 MAY 2026 to 11 JUN 2026