

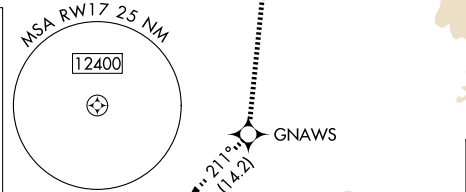
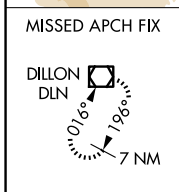
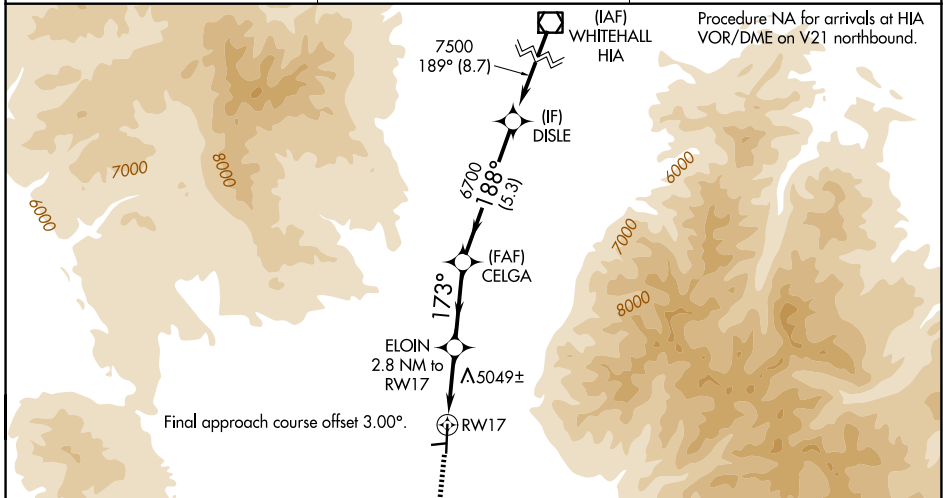
WAAS CH 93840 W17A	APP CRS 173°	Rwy Ldg TDZE Apt Elev	6000 4789 4789
--	------------------------	-----------------------------	---

RNAV (GPS) RWY 17

RUBY VALLEY FLD (RVF)

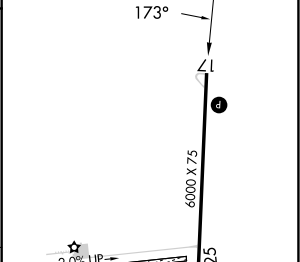
RNP APCH - GPS.	MISSED APPROACH: Climb to 11100 direct GNAWS and on track 211° to DLN VOR/DME and hold, continue climb-in-hold to 11100.
<p>⚠ Circling NA to Rwy 7 and 25. Circling NA east of Rwy 17-35. Rwy 17 helicopter visibility reduction below 3/4 SM NA. Baro-VNAV NA.</p>	

AWOS-3PT 119.025	SALT LAKE CENTER 132.4 338.3	CTAF 122.90
----------------------------	--	-----------------------

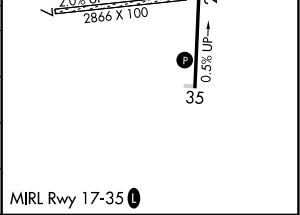


ELEV 4789	TDZE 4789
-----------	-----------

11100	GNAWS	DLN	tr 211°	VGSI and RNAV glidepath not coincident (VGSI Angle 3.00/TCH 28).	DISLE
↑	⬠	⬠			
1.5 NM	1.3 NM	3.1 NM	5.3 NM	6700	7500
				6700	
				5720	
					GP 3.00° TCH 45



CATEGORY	A	B	C	D
LPV DA	5064-1		275 (300-1)	
LNAV/VNAV DA	5443-1 7/8		654 (700-1 7/8)	
LNAV MDA	5300-1	511 (600-1)	5300-1 3/8	511 (600-1 3/8)
CIRCLING	5300-1	511 (600-1)	5300-1 1/2	5460-2 1/4 671 (700-2 1/4)



NW-1, 14 MAY 2026 to 11 JUN 2026

NW-1, 14 MAY 2026 to 11 JUN 2026