

APP CRS <b>328°</b>	Rwy Idg TDZE Apt Elev	<b>N/A</b> <b>N/A</b> <b>22</b>
------------------------	-----------------------------	---------------------------------------

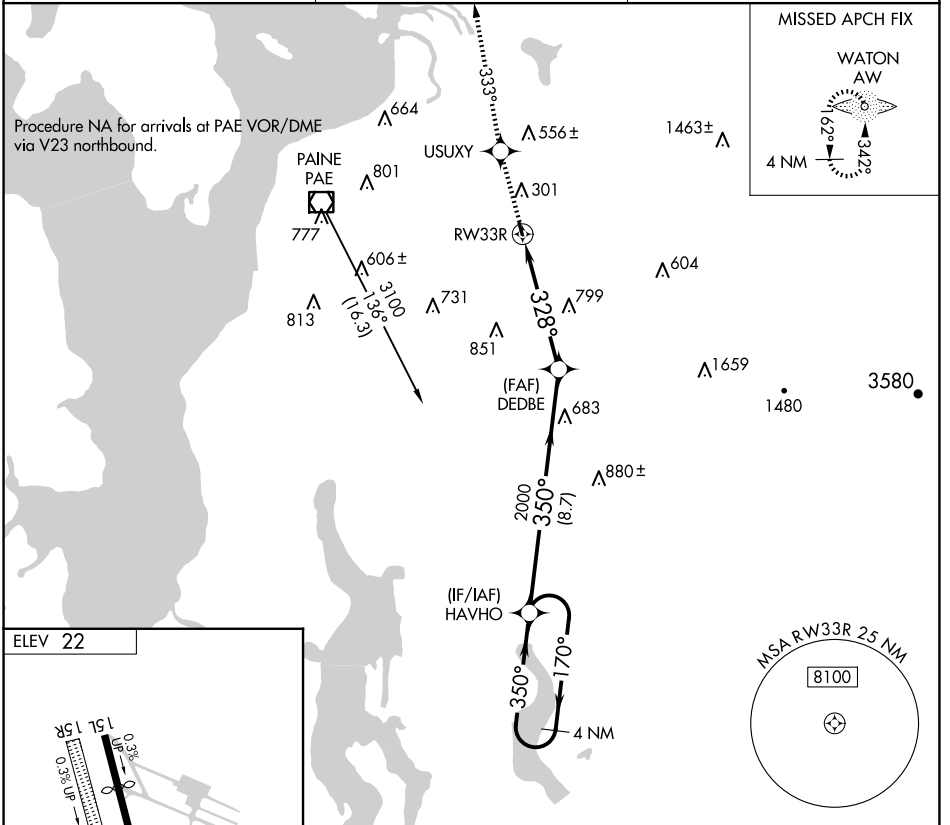
# RNAV (GPS)-A

## HARVEY FLD (S43)

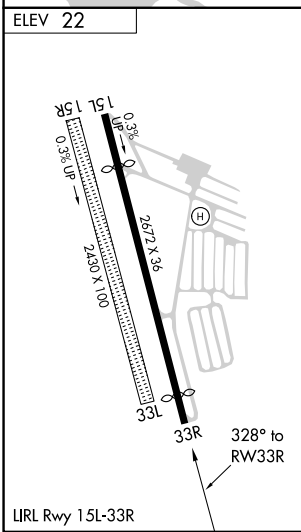
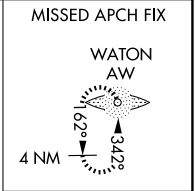
**NA** DME/DME RNP-0.3 NA. Procedure NA at night. Procedure NA for arrivals at PAE VOR/DME via V23 northbound. Use Arlington altimeter setting. When not received, use Everett altimeter setting and increase all MDA 60 feet. Helicopter visibility reduction below 1 SM NA.

**MISSED APPROACH:** Climb to 2000 direct USUXY and via 333° track to WATON LOM and hold.

<b>AWO AWOS-3PT</b> <b>135.625</b>	<b>SEATTLE APP CON</b> <b>128.5 306.9</b>	<b>UNICOM</b> <b>123.0 (CTAF)</b>
---------------------------------------	--	--------------------------------------



Procedure NA for arrivals at PAE VOR/DME via V23 northbound.



2000	USUXY	333° tr	AW	Visual Segment - Obstacles.
				HAVHO 4 NM Holding Pattern
			DEDBE	
			RW33R	
			328°	
			350°	
			170°	
			3100	
			5 NM	8.7 NM
CATEGORY	A	B	C	D
CIRCLING	1220-1¼ 1198 (1200-1¼)	1220-1½ 1198 (1200-1½)	NA	

NW-1, 14 MAY 2026 to 11 JUN 2026

NW-1, 14 MAY 2026 to 11 JUN 2026