

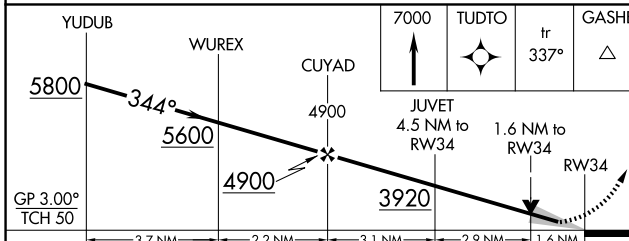
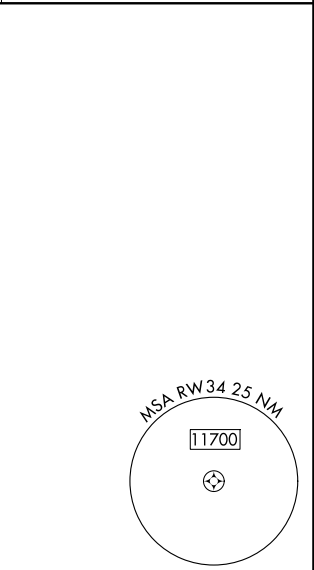
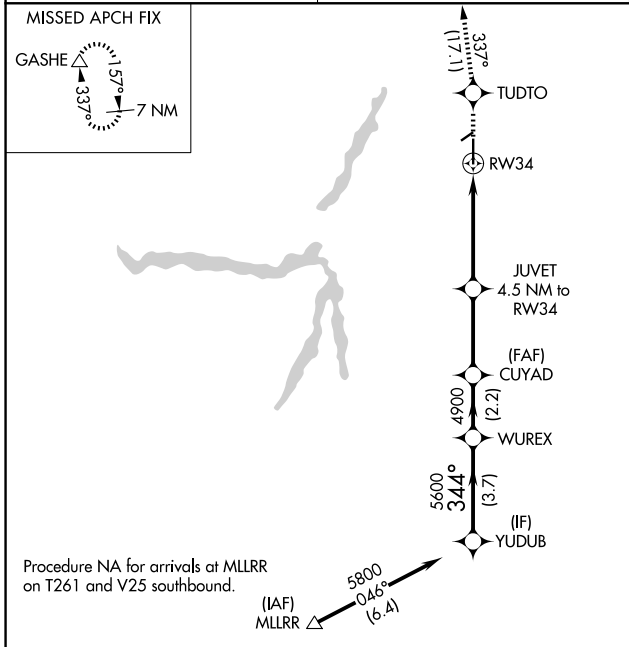
WAAS CH 60930 W34A	APP CRS 344°	Rwy Ldg TDZE 2438 Apt Elev 2438	5091 2438 2438
--	------------------------	---	---

RNAV (GPS) RWY 34

MADRAS MUNI (S33)

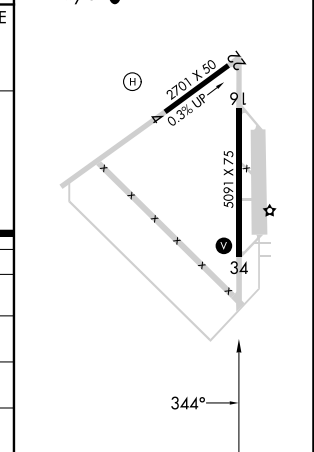
RNP APCH - GPS.		MISSED APPROACH: Climb to 7000 direct TUDTO and on track 337° to GASHE and hold, continue climb-in-hold to 7000.
<p>⚠ Circling Rwy 22 NA at night. Baro-VNAV and VDP NA when using Redmond altimeter setting. For uncompensated Baro-VNAV systems, LNAV/VNAV NA below 33° -20°C -19°C or above 54°C. When local altimeter setting not received, use Redmond altimeter setting and increase LPV DA to 2832 feet and all visibilities $\frac{3}{8}$ SM. Increase LNAV/VNAV DA to 2846 feet and all visibilities $\frac{1}{4}$ SM. Increase all MDAs 160 feet and LNAV visibility Cat C $\frac{3}{8}$ SM, and Circling visibility Cat C $\frac{3}{8}$ SM.</p>		

AWOS-3PT 132.425	SEATTLE CENTER 126.15 269.475	UNICOM 122.8 (CTAF) ①
----------------------------	---	---------------------------------



ELEV 2438	TDZE 2438
MRL Rwy 16-34 ①	
REIL Rwy 34 ①	

CATEGORY	A	B	C	D
LPV DA	2688- $\frac{3}{4}$ 250 (300- $\frac{3}{4}$)			NA
LNAV/VNAV DA	2702- $\frac{7}{8}$ 264 (300- $\frac{7}{8}$)			NA
LNAV MDA	3000-1	562 (600-1)	3000-1 $\frac{1}{8}$ 562 (600-1 $\frac{1}{8}$)	NA
CIRCLING	3000-1 562 (600-1)	3020-1 582 (600-1)	3020-1 $\frac{1}{8}$ 582 (600-1 $\frac{1}{8}$)	NA



NW-1, 14 MAY 2026 to 11 JUN 2026

NW-1, 14 MAY 2026 to 11 JUN 2026