

| | | |
|-------------|----------|-------------|
| APP CRS | Rwy Idg | 2962 |
| 144° | TDZE | 839 |
| | Apt Elev | 839 |

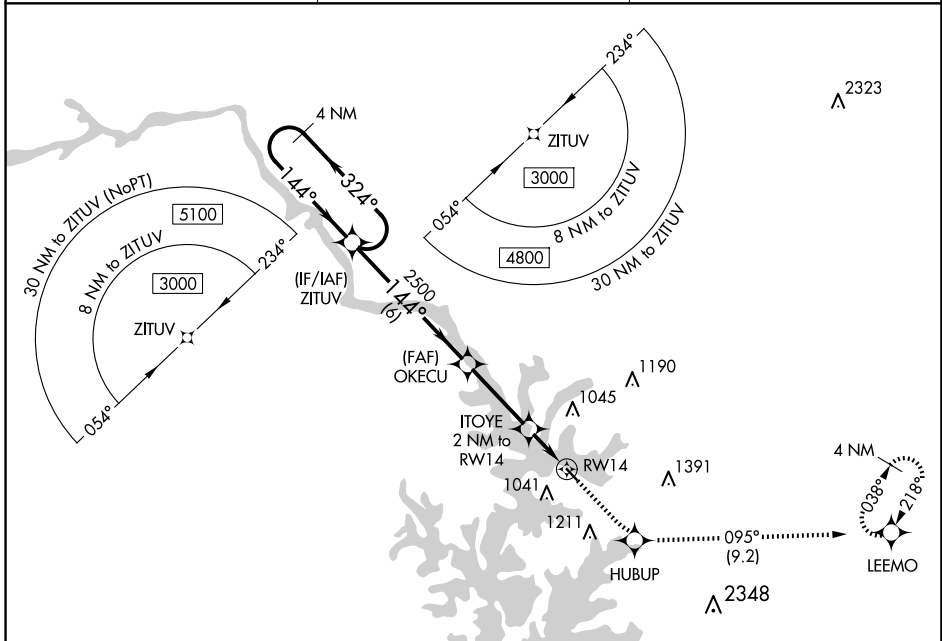
RNAV (GPS) RWY 14

LAKE NORMAN AIRPARK (14A)

NA Procedure NA at night. DME/DME RNP-0.3 NA. Use Statesville altimeter setting; when not received, use Charlotte altimeter setting and increase all MDA 40 feet. Rwy 14, 32 helicopter visibility reduction below 1 SM NA.

MISSED APPROACH: Climb to 4000 direct HUBUP and on track 095° to LEEMO and hold, continue climb-in-hold to 4000.

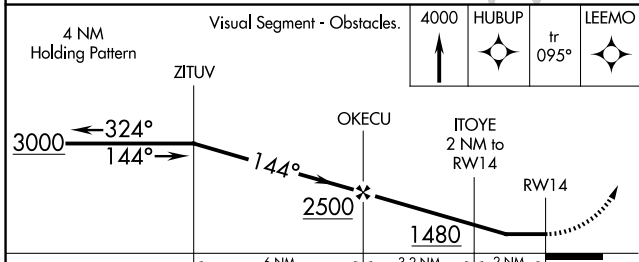
| | | |
|------------------------------|--|---------------------------------|
| SVH AWOS-3 119.225 | CHARLOTTE APP CON 134.75 257.2 | UNICOM 122.8 (CTAF) 1 |
|------------------------------|--|---------------------------------|



SE-2, 14 MAY 2026 to 11 JUN 2026

SE-2, 14 MAY 2026 to 11 JUN 2026

| | | | |
|------|-----|------|-----|
| ELEV | 839 | TDZE | 839 |
|------|-----|------|-----|



| CATEGORY | A | B | C | D |
|----------|-----------------------|-----------------------|----|---|
| LNVA MDA | 1360-1 | 521 (600-1) | NA | |
| CIRCLING | 1440-1 601 (700-1) | 1500-1 661 (700-1) | NA | |

