

(YODUH2.YODUH) 25219

AL-10309 (FAA)

BOERNE STAGE AIRFIELD (5C1)
SAN ANTONIO, TEXAS

YODUH TWO DEPARTURE (RNAV)

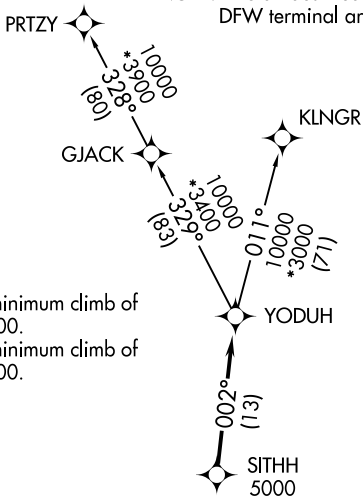
SAN ANTONIO DEP CON
125.1 307.0

RNAV 1 - DME/DME IRU or GPS.

RADAR required for non-GPS equipped aircraft.
RADAR required.

**TOP ALTITUDE:
ASSIGNED BY ATC**

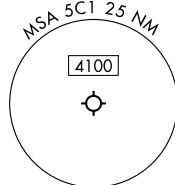
NOTE: Aircraft destined for airports north/northeast of
DFW terminal area must file the KLNGR Transition.



TAKEOFF MINIMUMS

Rwy 17: Standard with minimum climb of
210' /NM to 2200.

Rwy 35: Standard with minimum climb of
250' /NM to 3800.



NOTE: Chart not to scale.

DEPARTURE ROUTE DESCRIPTION

TAKEOFF RUNWAY 17: Climb on heading 169° or as assigned by ATC, for vectors to SITHH, thence. . .

TAKEOFF RUNWAY 35: Climb on heading 349° or as assigned by ATC, for vectors to SITHH, thence. . .

. . . on track 002° to YODUH, then on transition. Maintain ATC assigned altitude. Expect filed altitude 10 minutes after departure.

KLNGR TRANSITION (YODUH2.KLNGR)
PRTZY TRANSITION (YODUH2.PRTZY)

YODUH TWO DEPARTURE (RNAV)
(YODUH2.YODUH) 07AUG25

SAN ANTONIO, TEXAS
BOERNE STAGE AIRFIELD (5C1)

SC-3, 14 MAY 2026 to 11 JUN 2026

SC-3, 14 MAY 2026 to 11 JUN 2026