

WAAS CH 93902 W13A	APP CRS 126°	Rwy Ldg TDZE 1124 Apt Elev 1126	5500
----------------------------------------	------------------------	-----------------------------------------------------	-------------

RNAV (GPS) RWY 13

WILLMAR MUNI/JOHN L RICE FLD (BDH)

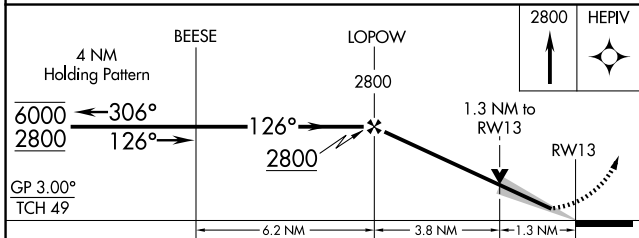
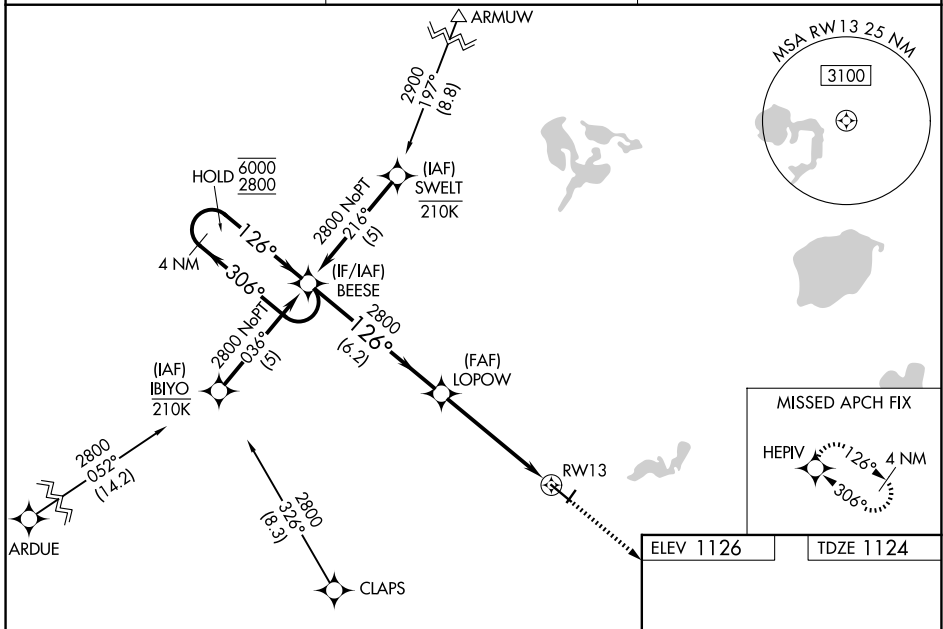
RNP APCH - GPS.

⚠ For uncompensated Baro-VNAV systems, LNAV/VNAV NA below -17°C or above 54°C. Circling NA to Rwy 3 and 21. Inop table does not apply to LPV. For inop ALS, increase LNAV/VNAV all Cats visibility to 1½ SM, LNAV Cats A and B to 1 SM and LNAV Cats C and D visibility to 1¾ SM. When local altimeter setting not received, use Olivia altimeter setting: increase LPV DA to 1379 feet; increase LNAV/VNAV DA to 1584 feet and all visibilities ½ SM; increase all MDAs 60 feet and Circling visibility Cat D ¼ SM. Baro-VNAV and VDP NA when using Olivia Rgnl altimeter setting.

MALSR

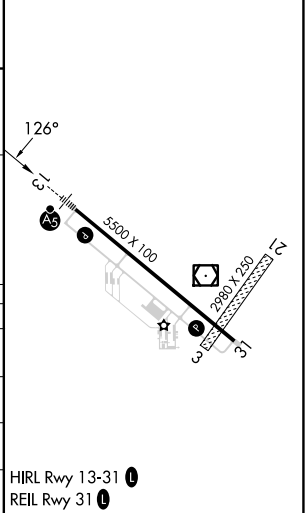
MISSED APPROACH:
Climb to 2800 direct HEPIV and hold.

AWOS-3PT 118.75	MINNEAPOLIS CENTER 125.5 323.1	UNICOM 122.8 (CTAF) 0
---------------------------	------------------------------------------	---------------------------------



ELEV 1126	TDZE 1124
-----------	-----------

CATEGORY	A	B	C	D
LPV DA		1324-¾	200 (200-¾)	
LNAV/VNAV DA		1529-¾	405 (500-¾)	
LNAV MDA	1600-¾	476 (500-¾)	1600-1	476 (500-1)
CIRCLING	1600-1	474 (500-1)	1660-1½	1960-2¾
			534 (600-1½)	834 (900-2¾)



NC-1, 14 MAY 2026 to 11 JUN 2026

NC-1, 14 MAY 2026 to 11 JUN 2026